

Manchester Hospital Notes

Intermediate Care Sent private, noon - 3 p.m.; private rooms, 10 a.m. - 2 p.m., and 4 p.m. - 8 p.m. Pediatrics: Parents allowed any time except noon-2 p.m.; others, 2 p.m. - 8 p.m. Self Service: 10 a.m. - 2 p.m.; 4 p.m. - 8 p.m. Intensive Care and Coronary Care: Immediate family only, any time, limited to five minutes. Maternity: Fathers, 11 a.m. - 12:45 p.m., and 4:30 p.m. - 8 p.m.; others, 2 p.m. - 4 p.m., and 6:30 p.m. - 8 p.m. Age 12 and over in maternity, 12 in other areas, no limit in self-service. All emergency patients and outpatients are requested to use the new emergency room entrance off Army St. Access to the entrance is via entrance driveways.

Debra Wallace Chosen Miss Future Secretary

A Manchester High School senior and a member of the Avia M. Kellogg Chapter of the Future Secretaries of America (FSA) Saturday was named Connecticut Miss Future Secretary from among five state candidates. The announcement was made at the Connecticut Division of the National Secretaries Association (International, Inc.) in New York City. She is Debra Marie Wallace, daughter of Mr. and Mrs. Raymond E. Wallace Jr., of 109 Croft Dr. At Saturday's conference, held at the Lord Cromwell Inn in Cromwell, she received a \$25 U. S. Savings Bond. Her state honor also makes her eligible for the \$2,000 scholarship to be awarded to one of the five district winners by the National Secretaries Association. The scholarship will be paid directly to the institution where the winner enrolls. Miss Wallace said she is planning to attend the Manchester Community College executive secretarial program in September. She also was named to the Connecticut Women's Club of Greater Hartford, a position of honor. She is a member of the FSA chapter at Manchester High School. Her business teachers are Mrs. Carol A. Moriarty, advisor at the Avia M. Kellogg Chapter; Miss Thelma

Typing I and shorthand I; Mrs. Patricia Nielsen, typing II; and James Kaiser, business III. NSA was established to help students who are interested in pursuing a secretarial career. In addition to the FSA chapter at Manchester High School, the organization has chapters at East Catholic High School and the Mountain Laurel Chapter at Manchester Community College. All four schools are black universities. The band judged best will win \$10,000, the second place \$7,000 and the other two, \$4,000 each. The competition will be held at Texas Stadium, new home of the Dallas Cowboys.

Happiness Is... A REALLY CLEAN LAUNDROMAT TUESDAY AND WEDNESDAY SPECIAL 8 Lbs. DRY CLEANING — \$1.50 Quality Speed Queen Equipment BELCON LAUNDROMAT — 309 Green Rd.

The Needlepoint Shop ROUTE 44A & QUARRY ROAD BOLTON NOTCH 10:00 to 5:30 Monday thru Saturday Call 643-4342

Exciting New Sculpture Shag Haircut

Ultra-feminine hairstyles for the young and young-at-heart in your most flattering length... short, medium or long. Swinging, free and easy fluid lines with natural movement and holding power created by "Pivot Point Cut." Worn by famous models in Paris and New York to complement the new fashions.

AT YOUR SERVICE SCHULTZ BEAUTY SALON 44 OAK ST. MANCHESTER TEL. 643-8951

Subdivision Regulations

Page 2 VOL. XCL, NO. 175 (TWENTY PAGES)

Manchester Evening Herald

Manchester—A City of Village Charm MANCHESTER, CONN., TUESDAY, APRIL 25, 1972 (Classified Advertising on Page 17) PRICE FIFTEEN CENTS

The Weather

Clear, quite cool tonight; low 38 to 35, 26 in normally cloudy areas. Tomorrow sunny; high near 60. Thursday's outlook... sunny, reasonable.

Foe Racing South

By GEORGE ESPRER Associated Press Writer SAIGON (AP) — South Vietnamese forces in the central highlands abandoned two more bases under fire by Viet Democratic forces Saturday. The South Vietnamese put six infantry battalions—up to 3,000 men—at the Yo Dinh defensive line and ordered scattered units to drive toward Kontum City. The South Vietnamese put six infantry battalions—up to 3,000 men—at the Yo Dinh defensive line and ordered scattered units to drive toward Kontum City. The South Vietnamese put six infantry battalions—up to 3,000 men—at the Yo Dinh defensive line and ordered scattered units to drive toward Kontum City.

Dual Primaries Open

By THE ASSOCIATED PRESS Democrats in Pennsylvania EST in both states. Democrats in Pennsylvania EST in both states. Democrats in Pennsylvania EST in both states. Democrats in Pennsylvania EST in both states. Democrats in Pennsylvania EST in both states.

'Ooh, Did I Do That?' Guilty looking canine, partly hidden at left, hopes approaching truck in Lancaster, Pa., won't see him.



Space Crew Rock-Sifting

SPACE CENTER, Houston (AP) — Apollo 16's astronauts leisurely sabbath today was a 219,707 miles from earth. The only major event on a 28,984 miles from the moon and 219,707 miles from earth. The only major event on a 28,984 miles from the moon and 219,707 miles from earth.

5 Held in Street Affray; Police Cruiser Damaged

A police cruiser was mangled and five youths arrested last night in the city center. The series of incidents began when Patrolman Donald Wright, while on patrol along Main St., saw what appeared to be a small fire in Center Spring Park. He drove his cruiser into the park where he found it.

Kissinger Visits Moscow To Discuss Viet Problem

WASHINGTON (AP) — Pres. Thursday until Monday and Kissinger visited Moscow to discuss the Vietnam problem. Kissinger, appearing briefly before a news conference at the White House, refused to divulge specific topics covered in his four days of conference.

Congressional Path Open for Agostinelli

By BOB E. COHEN (Herald Reporter) When former Hartford Mayor Ann Uccello announced Saturday she will not seek the GOP nomination for U.S. representative in the First Congressional District, former Manchester Mayor Nathan Agostinelli immediately became the frontrunner for the nomination.

Chamber Section

Today's Herald contains five pages of news and advertising. The special pages are 7, 8, 9 and 10. The special pages are 7, 8, 9 and 10. The special pages are 7, 8, 9 and 10.

ADMITTED YESTERDAY: Mrs. Anna Agnew, 65 Colver St. Rd.; Paul Buehner, 169 Autumn St.; Mabel Comber, Enfield; as they traveled for home to Robert Featherstone, 469 Griffin Rd., South Windsor; George Edridge, 182 Edridge Rd., East Hartford; Lemuel Howlett, Stafford Springs; Catherine Jordan, East Hartford; Mrs. Edna M. Kline, 22 Hollister St.; Edward F. Kline, 45 Kane Rd.; Mrs. Mildred Merritt, 121 Harvard St.; Glastonbury; Raymond Manna, 150 Brookfield Rd., Bolton; Loraine Marie, 49 Oakland Rd., South Windsor. Also, Thomas McKenna, 36 Elmwood Rd.; Mrs. Elizabeth Perzan, Hartford; William Poulton, 50 Wadsworth St.; Mrs. Palmina Maglio, 801 Elmwood Dr.; Alfred Roth, 21 Russell Dr.; Vernon; Jeanne M. Amann, 86 W. Center St.; Tamara Szwed, Forest Rd.; Cheryl S. Szwed, 928 Ellington Rd.; Windsor; Brian K. Szwed, East Hartford; Douglas Thompson, 4 Brent Dr.; Vernon; Harry Hunkle, 181 Hollister St.; Mrs. Mary Turner, 37 Hyde St.; Mrs. Joyce Zakrewski, Wethersfield.

14K Family Rings for Mother. A. Traditional, Reg. \$22... 16.88. B. Vogue, Reg. \$34... 23.88. C. Regency, Reg. \$44... 31.88. D. Fleetwood, Reg. \$48... 34.88.

14K Diamond Pendants. For Mom! Great Gift Idea! Heart shaped, substar, rose or tear drop pendant with 14K gold chain; gift boxed. Pre-Planted Potted Roses. 2.99. Deluxe grade 1 popular varieties: Blaze, Peace, Chrysler Imperial, Mjave, etc. Pruned, waxed, potted in fertilized soil.

Indoor - Outdoor Colorful Snack and Stack Tables. 177 Main St. Also, Mrs. Nellie Bradley, 44 Greenwood Dr.; Mrs. Kathryn Braham, Enfield; Mrs. Rosemary Williams, Bloomer Rd.; Hebron; Mrs. Cecelia Perasto, 23 Redwood Rd.; Mrs. Wendy Hamilton, Willimantic; Mrs. June Connel, Ellington; Ludwik Zapanski, 180 Greenwood Dr.; Lettuce Branch; Coventry; Paul J. Quish, 37 Litch St.; Mrs. Betty Deslaures, Carpenter Rd.; Coventry; Mrs. Joyce McKay and son, 113 Range Hill Dr., Vernon.

24 1/2" x 72" Fold-Away Cot Bed. Light, rugged aluminum frame with 1 1/2" foam mattress covered with striped cotton ticking. Folds compactly. 9.77.

7" Circular Saw with Metal Case. Rip guide, combination blade, 1.500 RPM, 9 amp, 1 year U.L. rated motor. 17.88.

Kotex Napkins, Tame Creme Rinse, Nexoma Shave Cream, Dippidy Do, Gillette Right Guard, Adorn Hair Spray, Puffer Kite, Dow Deodorizer, Deem for Steam Irons, Automatic Vanish, Behold Polish, Matchbox Cars, 2 for 88¢.

General Electric Sealed Beams, General Electric Flashcube, General Electric 2 Slice Auto. Toaster, General Electric Spray, Steam, Dry Iron.

Space Saver Closet Helpers, Garment Rack, "Whole Earth Cookbook", "Trouble at the Top", "11 Harrowhome".

All Leather Youth Fielder's Glove, Full Size Leather Fielder's Glove, Red, White, Blue Nylon Wound Basketball, Playtex Baby Gift Set, Playtex Baby Nurer Kit, Playtex Nurer Bottles.

MANCHESTER — 1145 Tolland Tpk. Sale Mon. thru Wed. Mon. 9 a.m. to 9:30 p.m. Saturday 9 a.m. to 9:30 p.m.

2 5 APR 25

Manchester Evening Herald
PUBLISHED BY THE MANCHESTER EVENING HERALD CO.
125 South Street, Manchester, Conn. 06105
Founded October 1, 1881

Subscription Rates
Yearly \$12.00
Six Months \$6.50
Three Months \$3.75
One Month \$1.25
By Check or Money Order

MEMBERS OF THE ASSOCIATED PRESS
The Associated Press is exclusively entitled to the use of reprints of all news dispatches credited to it or not otherwise credited, and also the right to syndicate its material.

MEMBER AUDIT BUREAU OF CIRCULATION
Tuesday, April 25

Even Doves Should Hope It Works

Vietnamization is different things to different people. To President Nixon, it has been the formula by which he could get the United States out of Vietnam without those sufferings of conscience and reputation which would be in store for him if he should get us out and Hanoi should then proceed to the easy military conquest of Saigon.

To the President's political critics, and to the more responsible among our doves, Vietnamization is a deceiving slogan which is intended to gloss over the fact that the President is still out after a military victory in Vietnam.

The current military news is that, whatever it is, Vietnamization is now being put to the critical test in the battlefields of South Vietnam. The trend of the military news, so far, indicates that, if Vietnamization is succeeding, it is not succeeding in any way which would suggest its capacity to press toward an old-fashioned military victory over North Vietnam, but merely in an ability to defeat North Vietnamese efforts to claim a positive and recognizable victory in its present campaigns.

From the present nature of the dispatches, one could guess that there may have to be fighting for several weeks more before there is any real assurance that the North Vietnamese attacks have been dealt with.

At this point, our observation is this: That, if they can bring themselves to imagine the alternative consequences, even the President's critics and even the doves would have to join in the hope that Vietnamization succeeds.

We can conceive of no way in which military success for North Vietnam in its present operations can produce peace for anybody. In fact, now, as it has been from the very start, the only good military news from Vietnam would have to be news of stalemate. To give President Nixon's Vietnamization what we believe to be its proper interpretation, it was in fact an effort to make policy on the basis of, and to guarantee a continuance of, a condition of military stalemate — not victory. Hanoi has rejected that offer of military stalemate in order to make its own try for a decisive military victory. We deplore the new fighting and tragedy this decision by Hanoi involves.

But even doves should hope that Vietnamization works well enough, even though that may rebound to the political credit of President Nixon, to keep North Vietnam from attaining its objective.

Also From China
Down in Washington, D. C. long lines have been forming at the zoo for a glimpse of the giant pandas which are modern China's gift to the American people, Premier Chou and President Nixon being the agents.

Running up the seaboard from Washington to Hartford there is, these days, the yellow flicker and flash of another gift from another China, the China of more than a hundred years ago. The agents who brought forthrightly to this country were the clipper captains of New England.

As against the limited mortality of the pandas, some of whom never can be taught to reproduce themselves, forsythia has the tremendous quality of seeming able to live as long as the land itself. It is the first lush ornamentation of every spring, colored to honor and reflect that basic vigor of all plant life, the sun. Here it grows wild and uncontrolled; here it has been clipped and shaped to the fancy of some particular owner; but everywhere it gives the same signal: it is time to rake and neat up all around because, from now on, everything is going to be very beautiful.

The Wasps Strike Back

I had arrived early for the appointment and was just about to begin counting the umbrellas in the anteroom of the Better Element Club when a distinguished-looking gentleman approached. "I am Prosper Burnley Waddington VI," said he. "So good of you to take an interest in our cause."

My host ushered me into the large reading room and we were soon settled into deep leather chairs. At a barely noticeable signal, a distinguished-looking waiter appeared with sherry, and, after some small remarks about the unseasonable weather, Waddington plunged ahead.

"As you know," he said, "I am president of the English-American Anti-Defamation League. Our organization is at the moment small because English-Americans are a minority of modest size and also of an inclination not to organize in behalf of their own self-interest. But in recent years we EAs have observed the success other groups have had in this area, and we think it time we got our own ship under sail."

The interview with Waddington had been arranged after our office had received a news release announcing the formation of the English-American Anti-Defamation League. The release carried the headline: "Time To Act!"

Now I must tell you that each day's mail brings many news releases headlined "Time To Act!" So the appearance of this one did not cause all typewriters to jam. But because all self-respecting ethnic groups are now in the propaganda business, the announcement of an English-American pressure group seemed to round things out.

"The release continued: 'English-Americans awake! In unity there is strength. We must combat the trend toward slurring English-Americans. We are people too. We have helped to make this country great. Let us stand up and be counted. We must rise up against the English jokes that imply the English are dirty, stinky, lazy, and stupid. The English are a great people. Send contributions to the English-American Anti-Defamation League. Lloyd Featherstone-hugh, Treasurer.'

My personal interest in ethnic organizations is small. Like most Americans, I possess an erratic lineage that winds about an assortment of foreign countries, making a passionate attachment to any ethnic group impossible. But it is still possible to understand those feelings of loyalty that many of my countrymen share toward this or that foreign state. So it was with a certain amount of sympathy that I dropped in on the Better Element Club the other day to see what was up with the put-upon Wasps.

"...and furthermore, I should like to emphasize," continued Prosper Burnley Waddington, "that English-American Americans will no longer sit idly by as their influence and heritage are ignored in the United States. I can understand that." "I can understand that," I said.

"Take for instance that new book about the decline of the Wasps," said my host. "It is indeed a fine book. Why must we be referred to as Wasps? That is a hate name. We are Americans just the same as everybody else. We pay our taxes, we serve our country, and we are insulted."

"I guess America is just a racist society," I said. "The English-American are not going to take it lying down. For years Hollywood has made movies about British sea dogs, and they are determined to maintain discipline. Do you know what that sort of thing does to the English-American's self-image? Young English-Americans grow up ashamed of their heritage. We plan to picket all movie theaters showing 'Moby-Dick on the Bounty.' Actually, we have reason to believe that Captain Bligh was 'Bulwain' and not a British sea dog."

"And you are alarmed by the popularity of English jokes?" I asked. "Just so. Hear me on this morning in the anteroom, where English-Americans are forbidden to go swimming in the Hudson River because they leave rings around the pillage." "That's a little bit of the English climate is said to be inferior. English cooking is said to be fit only for cats and dogs. The English aren't supposed to have any sense of humor. English women are said to be as cold as the Cornish coast in January. English men are spoken of as having a shopkeeper mentality — even Napoleon said something like that, the blasted frog."

"I can see you have plenty to be angry about," I said. "There's still more. Have you ever heard the expressions 'body English' or 'put a little English on the ball'? The word 'English' in this sense is used to suggest twisting or contumacious." "I hadn't realized..." "What's that?" "Think about it. We hear so much these days about the cultural enrichment of the New World by the Germans, the Irish, the Italians, the Jews, the Blacks, the Scandinavians, and the Spanish-speaking immigrants. But who ever says anything about the English contribution to America? All the children learn in school is that Genghis Khan was a despotic lunatic, that the British burned the White House, and that England had been treated as a colony by the Germans if the Americans hadn't rescued them."



ACT II DIE FLEDERMAUS: Connecticut Opera Presentation At Bushnell April 22; In The Forefront Cornelis Ophoff As Von Eisenstein, Rita De Carlo As Prince Orlofsky, Jean Fenn As Rosalinde

Inside Report

By Rowland Evans Jr. and Robert D. Novak

PHILADELPHIA — In the plush Canteen Room of the Bellevue-Stratford Hotel, Ben Hubert Humphrey brought Philadelphia's top labor hierarchy cheering to its feet with his emotional appeal to battle the regular Democratic party organization in today's Presidential primary election where he desperately needs a victory.

"I am not about to let some political machine grind me into a hate name. We are Americans just the same as everybody else. We pay our taxes, we serve our country, and we are insulted."

"I guess America is just a racist society," I said. "The English-American are not going to take it lying down. For years Hollywood has made movies about British sea dogs, and they are determined to maintain discipline. Do you know what that sort of thing does to the English-American's self-image? Young English-Americans grow up ashamed of their heritage. We plan to picket all movie theaters showing 'Moby-Dick on the Bounty.' Actually, we have reason to believe that Captain Bligh was 'Bulwain' and not a British sea dog."

"And you are alarmed by the popularity of English jokes?" I asked. "Just so. Hear me on this morning in the anteroom, where English-Americans are forbidden to go swimming in the Hudson River because they leave rings around the pillage." "That's a little bit of the English climate is said to be inferior. English cooking is said to be fit only for cats and dogs. The English aren't supposed to have any sense of humor. English women are said to be as cold as the Cornish coast in January. English men are spoken of as having a shopkeeper mentality — even Napoleon said something like that, the blasted frog."

"I can see you have plenty to be angry about," I said. "There's still more. Have you ever heard the expressions 'body English' or 'put a little English on the ball'? The word 'English' in this sense is used to suggest twisting or contumacious." "I hadn't realized..." "What's that?" "Think about it. We hear so much these days about the cultural enrichment of the New World by the Germans, the Irish, the Italians, the Jews, the Blacks, the Scandinavians, and the Spanish-speaking immigrants. But who ever says anything about the English contribution to America? All the children learn in school is that Genghis Khan was a despotic lunatic, that the British burned the White House, and that England had been treated as a colony by the Germans if the Americans hadn't rescued them."

"I can see you have plenty to be angry about," I said. "There's still more. Have you ever heard the expressions 'body English' or 'put a little English on the ball'? The word 'English' in this sense is used to suggest twisting or contumacious." "I hadn't realized..." "What's that?" "Think about it. We hear so much these days about the cultural enrichment of the New World by the Germans, the Irish, the Italians, the Jews, the Blacks, the Scandinavians, and the Spanish-speaking immigrants. But who ever says anything about the English contribution to America? All the children learn in school is that Genghis Khan was a despotic lunatic, that the British burned the White House, and that England had been treated as a colony by the Germans if the Americans hadn't rescued them."

"I can see you have plenty to be angry about," I said. "There's still more. Have you ever heard the expressions 'body English' or 'put a little English on the ball'? The word 'English' in this sense is used to suggest twisting or contumacious." "I hadn't realized..." "What's that?" "Think about it. We hear so much these days about the cultural enrichment of the New World by the Germans, the Irish, the Italians, the Jews, the Blacks, the Scandinavians, and the Spanish-speaking immigrants. But who ever says anything about the English contribution to America? All the children learn in school is that Genghis Khan was a despotic lunatic, that the British burned the White House, and that England had been treated as a colony by the Germans if the Americans hadn't rescued them."

Connecticut Yankee

By A.H.O.

Ever since the legislative night which united the calendar days of April 14 and 15 into the Illinois senator's great pre-adjustment spasm, we have been carrying in our memory the image of some lawmaker standing up and admonishing his colleagues to the effect that sanity appeared to have deserted them, so that the very arguments they were making no longer made sense.

The sessions that late Friday night and that early Saturday morning did indeed produce a startling series of demagogues. His speeches emphasized his ties to Macalester College in St. Paul, where the board of directors tried to throw him out as a dangerous left-wing professor. "I am not about to let some political machine grind me into a hate name. We are Americans just the same as everybody else. We pay our taxes, we serve our country, and we are insulted."

"I guess America is just a racist society," I said. "The English-American are not going to take it lying down. For years Hollywood has made movies about British sea dogs, and they are determined to maintain discipline. Do you know what that sort of thing does to the English-American's self-image? Young English-Americans grow up ashamed of their heritage. We plan to picket all movie theaters showing 'Moby-Dick on the Bounty.' Actually, we have reason to believe that Captain Bligh was 'Bulwain' and not a British sea dog."

"And you are alarmed by the popularity of English jokes?" I asked. "Just so. Hear me on this morning in the anteroom, where English-Americans are forbidden to go swimming in the Hudson River because they leave rings around the pillage." "That's a little bit of the English climate is said to be inferior. English cooking is said to be fit only for cats and dogs. The English aren't supposed to have any sense of humor. English women are said to be as cold as the Cornish coast in January. English men are spoken of as having a shopkeeper mentality — even Napoleon said something like that, the blasted frog."

"I can see you have plenty to be angry about," I said. "There's still more. Have you ever heard the expressions 'body English' or 'put a little English on the ball'? The word 'English' in this sense is used to suggest twisting or contumacious." "I hadn't realized..." "What's that?" "Think about it. We hear so much these days about the cultural enrichment of the New World by the Germans, the Irish, the Italians, the Jews, the Blacks, the Scandinavians, and the Spanish-speaking immigrants. But who ever says anything about the English contribution to America? All the children learn in school is that Genghis Khan was a despotic lunatic, that the British burned the White House, and that England had been treated as a colony by the Germans if the Americans hadn't rescued them."

"I can see you have plenty to be angry about," I said. "There's still more. Have you ever heard the expressions 'body English' or 'put a little English on the ball'? The word 'English' in this sense is used to suggest twisting or contumacious." "I hadn't realized..." "What's that?" "Think about it. We hear so much these days about the cultural enrichment of the New World by the Germans, the Irish, the Italians, the Jews, the Blacks, the Scandinavians, and the Spanish-speaking immigrants. But who ever says anything about the English contribution to America? All the children learn in school is that Genghis Khan was a despotic lunatic, that the British burned the White House, and that England had been treated as a colony by the Germans if the Americans hadn't rescued them."

"I can see you have plenty to be angry about," I said. "There's still more. Have you ever heard the expressions 'body English' or 'put a little English on the ball'? The word 'English' in this sense is used to suggest twisting or contumacious." "I hadn't realized..." "What's that?" "Think about it. We hear so much these days about the cultural enrichment of the New World by the Germans, the Irish, the Italians, the Jews, the Blacks, the Scandinavians, and the Spanish-speaking immigrants. But who ever says anything about the English contribution to America? All the children learn in school is that Genghis Khan was a despotic lunatic, that the British burned the White House, and that England had been treated as a colony by the Germans if the Americans hadn't rescued them."

"I can see you have plenty to be angry about," I said. "There's still more. Have you ever heard the expressions 'body English' or 'put a little English on the ball'? The word 'English' in this sense is used to suggest twisting or contumacious." "I hadn't realized..." "What's that?" "Think about it. We hear so much these days about the cultural enrichment of the New World by the Germans, the Irish, the Italians, the Jews, the Blacks, the Scandinavians, and the Spanish-speaking immigrants. But who ever says anything about the English contribution to America? All the children learn in school is that Genghis Khan was a despotic lunatic, that the British burned the White House, and that England had been treated as a colony by the Germans if the Americans hadn't rescued them."

Chamber Member Roster

- AMUSEMENT AND ENTERTAINMENT: Manchester Drive-In Theatre, Concessionaire; Parkside Lanes, Sports Theatre, U.S. Theatre, Host; NOBLE: Commodore Motel; AUTOMOBILE DIVISION: Alcor Auto Parts Inc., Carter Chevrolet Co. Inc., Dillon Sales & Service Inc., Gorman Brothers, Manchester Transmission Co., Morley Brothers, Miller-Friedman Auto Tune-Up Center, Wholesale Tire of Manchester, Don Willis Garage; CONTRACTORS DIVISION: Ansell Construction Co., Andrew Amaldi Co., The Brown Staff Co., Barbo Woodworking Co., Edwell Home Improvement Co., Thomas D. Cole, Lawrence A. Converse III, Cayman Construction Co., Coughlin Roofing Co., Raymond Damato, Dean Construction Co., Gosselin-Wildes Supply Co., Fillozano Construction Co., First Hartford Realty, Glida Landscaping & Contracting Co., W. G. Gienney Co., J. G. Henshaw & Sons Inc., Jack B. Hunter Inc., Jarvel Construction Co., The L. P. Co. Inc., Manchester Pipe & Supply, J. A. McCarthy Inc., McElmurry Bros. Sewage Disposal Co., Soaks & Goldberg, U.S. Construction, Wilson Electrical Co., Wilson Millwork Co.; DEVELOPER DIVISION: Robert J. Beaton, Beaton Brothers, U. S. Builders Association Inc.; FINANCIAL DIVISION: American Collection Service Inc., Beneficial Finance Co., Commercial Bank & Trust Co., Arthur S. Danner, Federal Collection Bureau, Hartford National Bank & Trust Co., Household Finance Corp., Investment Consulting Inc., Manchester Savings & Loan Assn., Manchester State Bank, Fidelity Bank of Manchester; FUEL DIVISION: Bantley Oil Co., W. G. Gienney Co., M. A. Oil, Inc., Moriarty Brothers, New England Tank Lining Co., L. T. Wood Co.; INDIVIDUAL MEMBERSHIP: Nathan G. Agostinelli, George Bradish, Not many minutes later, when the House was snuffing out its attempt to repeal tuition at the University of Connecticut, one could hear one of the best workers for education the Legislature has ever had reaching for the argument that to eliminate tuition at UConn would constitute unfair competition for the state's private colleges, whose decline in enrollment had, of late, inspired a beginning of special state aid programs. The Year's Ago: A U.S. Ranger spacecraft was on its way to the moon, but the unmanned vehicle's communications system was not functioning.

J. Grant Swank Jr., executive vice president of the Chamber, dictates a letter to Mrs. Mildred Treball, secretary. By means of this special section, you are hereby invited to become a member of the chamber by contacting the office at 257 East Center St.

Mayor Salutes Local Chamber

MAYOR JOHN THOMPSON The orderly and progressive development of Manchester is a Chamber of Commerce and its community goal which has received strength from the involvement and talents of the Chamber's membership. Our industrial and commercial development have benefited from the Chamber's support. The Chamber's continuing interest in our Chamber of Commerce which is vitally concerned about the improvement of Main Street, community betterment projects planning and zoning improvements have been invaluable to our community.

I am also aware of the Chamber's sensitivity to proposals before the state and federal legislators. It is heartening to realize that the local business organization feels its voice significant enough to register its position with our state and national representatives. I think that one of the legislative highlights of the past 12 months was the "Meet To The Chamber" membership of 525 persons and firms I pledge my cooperation for the bettering of our town.

INSURANCE AND REAL ESTATE DIVISION: Barrows & Wallace, Inc., Beach-Tungusy, Inc., William E. Bellmore Agency, Clarke Insurance Agency, Crockett Agency Inc., Rodney T. Dolin Agency, First Hartford Realty Corp., Raymond German Insurance Agency, Warren R. Rowland, J. D. Real Estate, J. D. Real Estate Associates Inc., Jerry's Realty, Keith Real Estate, George T. LaDonne & Associates, John H. Lappen Inc., Keith & Blodgett Co., Manchester Properties, McKinley Brothers Inc., Metropolitan Life Insurance Co., Alico Pagan Agency, Phillips Agency, Earl J. Smith, Frank F. Shotton, Robert J. Smith Agency, Robert Wolverson Agency; MANUFACTURERS: A B & D Co. Inc., Anderson, C. R. Bury Co., Caryle Johnson Machine Co., Central Office, Co-Op Farmers Assn., Cheney Brothers, Edward Sheard, Donnell Co., Embury Tool & Mfg. Co. Inc., Egan, J. H., Gosselin-Wildes Supply Co., Gunner Manufacturing Co., Iona Manufacturing Co., Keith Co., Mal Tool & Engineering Corp., Millers Pella Co., Pioneer Acoustics Systems, Pussan Blast Manufacturing Co., Pussan Corp., Red Leo Metal Finishing Rogers Corp. (See Page Nine)

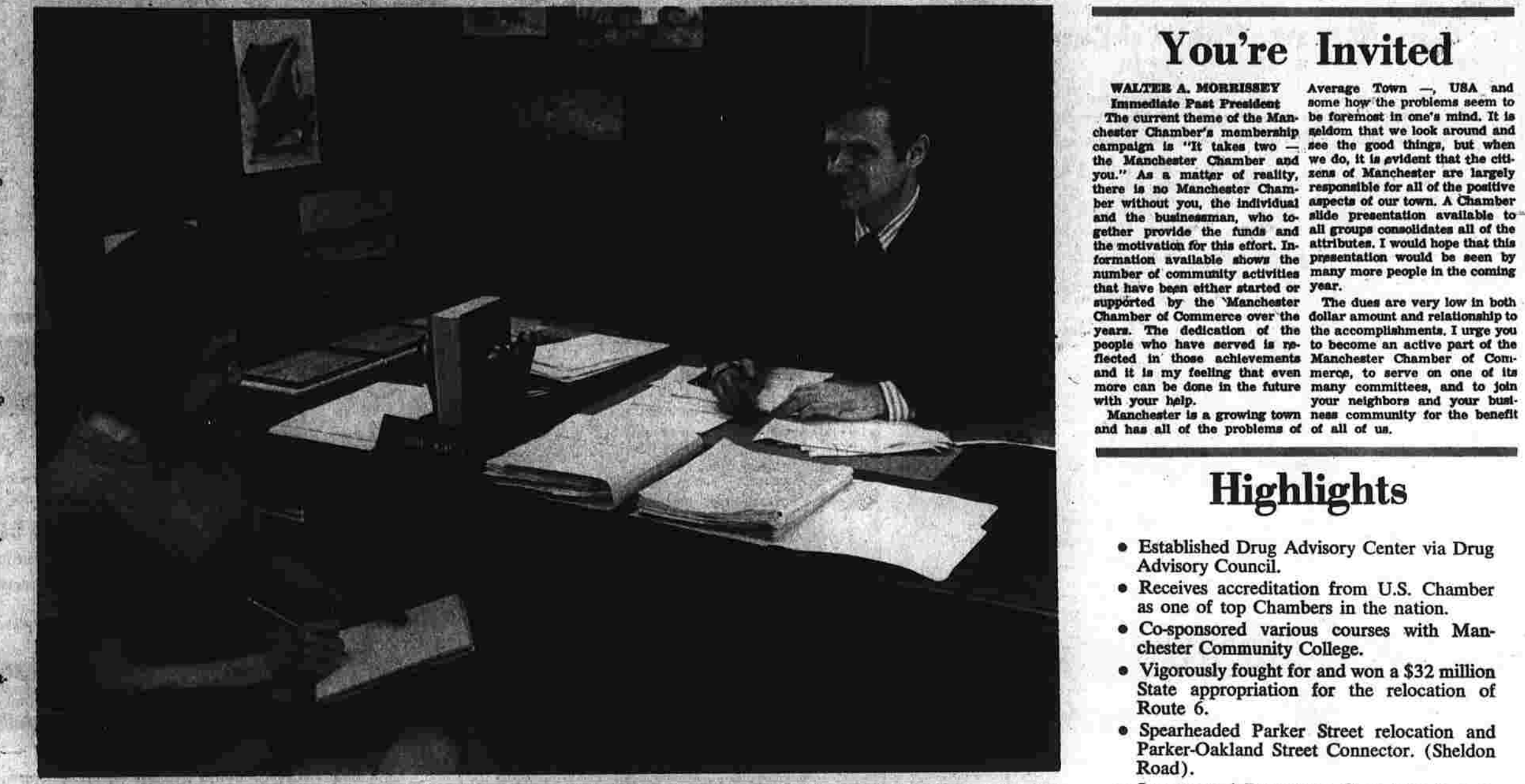
INSURANCE AND REAL ESTATE DIVISION: Barrows & Wallace, Inc., Beach-Tungusy, Inc., William E. Bellmore Agency, Clarke Insurance Agency, Crockett Agency Inc., Rodney T. Dolin Agency, First Hartford Realty Corp., Raymond German Insurance Agency, Warren R. Rowland, J. D. Real Estate, J. D. Real Estate Associates Inc., Jerry's Realty, Keith Real Estate, George T. LaDonne & Associates, John H. Lappen Inc., Keith & Blodgett Co., Manchester Properties, McKinley Brothers Inc., Metropolitan Life Insurance Co., Alico Pagan Agency, Phillips Agency, Earl J. Smith, Frank F. Shotton, Robert J. Smith Agency, Robert Wolverson Agency; MANUFACTURERS: A B & D Co. Inc., Anderson, C. R. Bury Co., Caryle Johnson Machine Co., Central Office, Co-Op Farmers Assn., Cheney Brothers, Edward Sheard, Donnell Co., Embury Tool & Mfg. Co. Inc., Egan, J. H., Gosselin-Wildes Supply Co., Gunner Manufacturing Co., Iona Manufacturing Co., Keith Co., Mal Tool & Engineering Corp., Millers Pella Co., Pioneer Acoustics Systems, Pussan Blast Manufacturing Co., Pussan Corp., Red Leo Metal Finishing Rogers Corp. (See Page Nine)

INSURANCE AND REAL ESTATE DIVISION: Barrows & Wallace, Inc., Beach-Tungusy, Inc., William E. Bellmore Agency, Clarke Insurance Agency, Crockett Agency Inc., Rodney T. Dolin Agency, First Hartford Realty Corp., Raymond German Insurance Agency, Warren R. Rowland, J. D. Real Estate, J. D. Real Estate Associates Inc., Jerry's Realty, Keith Real Estate, George T. LaDonne & Associates, John H. Lappen Inc., Keith & Blodgett Co., Manchester Properties, McKinley Brothers Inc., Metropolitan Life Insurance Co., Alico Pagan Agency, Phillips Agency, Earl J. Smith, Frank F. Shotton, Robert J. Smith Agency, Robert Wolverson Agency; MANUFACTURERS: A B & D Co. Inc., Anderson, C. R. Bury Co., Caryle Johnson Machine Co., Central Office, Co-Op Farmers Assn., Cheney Brothers, Edward Sheard, Donnell Co., Embury Tool & Mfg. Co. Inc., Egan, J. H., Gosselin-Wildes Supply Co., Gunner Manufacturing Co., Iona Manufacturing Co., Keith Co., Mal Tool & Engineering Corp., Millers Pella Co., Pioneer Acoustics Systems, Pussan Blast Manufacturing Co., Pussan Corp., Red Leo Metal Finishing Rogers Corp. (See Page Nine)

INSURANCE AND REAL ESTATE DIVISION: Barrows & Wallace, Inc., Beach-Tungusy, Inc., William E. Bellmore Agency, Clarke Insurance Agency, Crockett Agency Inc., Rodney T. Dolin Agency, First Hartford Realty Corp., Raymond German Insurance Agency, Warren R. Rowland, J. D. Real Estate, J. D. Real Estate Associates Inc., Jerry's Realty, Keith Real Estate, George T. LaDonne & Associates, John H. Lappen Inc., Keith & Blodgett Co., Manchester Properties, McKinley Brothers Inc., Metropolitan Life Insurance Co., Alico Pagan Agency, Phillips Agency, Earl J. Smith, Frank F. Shotton, Robert J. Smith Agency, Robert Wolverson Agency; MANUFACTURERS: A B & D Co. Inc., Anderson, C. R. Bury Co., Caryle Johnson Machine Co., Central Office, Co-Op Farmers Assn., Cheney Brothers, Edward Sheard, Donnell Co., Embury Tool & Mfg. Co. Inc., Egan, J. H., Gosselin-Wildes Supply Co., Gunner Manufacturing Co., Iona Manufacturing Co., Keith Co., Mal Tool & Engineering Corp., Millers Pella Co., Pioneer Acoustics Systems, Pussan Blast Manufacturing Co., Pussan Corp., Red Leo Metal Finishing Rogers Corp. (See Page Nine)

INSURANCE AND REAL ESTATE DIVISION: Barrows & Wallace, Inc., Beach-Tungusy, Inc., William E. Bellmore Agency, Clarke Insurance Agency, Crockett Agency Inc., Rodney T. Dolin Agency, First Hartford Realty Corp., Raymond German Insurance Agency, Warren R. Rowland, J. D. Real Estate, J. D. Real Estate Associates Inc., Jerry's Realty, Keith Real Estate, George T. LaDonne & Associates, John H. Lappen Inc., Keith & Blodgett Co., Manchester Properties, McKinley Brothers Inc., Metropolitan Life Insurance Co., Alico Pagan Agency, Phillips Agency, Earl J. Smith, Frank F. Shotton, Robert J. Smith Agency, Robert Wolverson Agency; MANUFACTURERS: A B & D Co. Inc., Anderson, C. R. Bury Co., Caryle Johnson Machine Co., Central Office, Co-Op Farmers Assn., Cheney Brothers, Edward Sheard, Donnell Co., Embury Tool & Mfg. Co. Inc., Egan, J. H., Gosselin-Wildes Supply Co., Gunner Manufacturing Co., Iona Manufacturing Co., Keith Co., Mal Tool & Engineering Corp., Millers Pella Co., Pioneer Acoustics Systems, Pussan Blast Manufacturing Co., Pussan Corp., Red Leo Metal Finishing Rogers Corp. (See Page Nine)

It Takes Two—Your Manchester Chamber of Commerce and You



J. Grant Swank Jr., executive vice president of the Chamber, dictates a letter to Mrs. Mildred Treball, secretary. By means of this special section, you are hereby invited to become a member of the chamber by contacting the office at 257 East Center St.

Application Page 8 Join the Chamber's Ranks Today

Application Page 8 Join the Chamber's Ranks Today

Application Page 8 Join the Chamber's Ranks Today

Application Page 8 Join the Chamber's Ranks Today

Application Page 8 Join the Chamber's Ranks Today

Application Page 8 Join the Chamber's Ranks Today

Application Page 8 Join the Chamber's Ranks Today

Application Page 8 Join the Chamber's Ranks Today

EXTRA News Special

You're Invited

WALTER A. MORRISSEY Immediate Past President of the Chamber of Commerce and Industry of Manchester, who has served in many capacities and who has been instrumental in the development of many of our community activities that have been started or supported by the Chamber. The dues are very low in both dollar amount and relationship to years. The dedication of the Chamber to become an active part of the Manchester Chamber of Commerce and Industry is my feeling that even more, to serve on one of its many committees, and to join with your neighbors and your business community for the benefit and has all of the problems of all of us.

Highlights

- Established Drug Advisory Center via Drug Advisory Council.
Receives accreditation from U.S. Chamber as one of top Chambers in the nation.
Co-sponsored various courses with Manchester Community College.
Vigorously fought for and won a \$32 million State appropriation for the relocation of Route 6.
Spearheaded Parker Street relocation and Parker-Oakland Street Connector. (Sheldon Road).
Inaugurated Downtown Committee to program Downtown Business District projects.
Conducts annual Arbor Day program.
Sponsors town-wide Scout clean-up project.
Administers Parkade Merchants Association.
Spearheaded Sanders Pond project toward a neighborhood park and recreation center.
Supported and actively worked for completion of the north end urban and renewal project.
Inaugurated Hockanum River Linear Park programming.
Developed town-wide retail promotional calendar for 1971 with the theme "Manchester... Regional Shopping Center for Eastern Connecticut."
Played a vital role in establishment of Teen Center and Manchester Oil Fuel Institute donated and maintains pool tables.
Sponsors annual "Welcome To New Teachers."
Supported abolition of the Electoral College.
Acted toward the defeat of the Payroll Tax proposal and Unemployment Compensation proposal.
Provided Solid State Fuel Cost Computer for OFI members.
Contractors Division providing improvements to original \$8,000 shelter for Kennedy Day Camp.
Active in industrial development and helping local businesses to expand.
Acts as a Better Business Bureau.
Established Historical Society.
Provides solicitations control program.
Established Manchester Scholarship Foundation.
Established Memorial Tree Program.
Provides telewarning system to combat stolen checks.
Endorsed and worked for northeast interceptor and secondary treatment plant.
Endorses State purchase of Case Mountain for Connecticut Forest System.
Sponsoring "Manchester Story" publication.
Publishes Industrial Directory of Manchester and a Directory of Town Clubs and Organizations.
Works for traffic and highway improvements.
Cooperated in formulated "Community Monograph."
Little League baseball team sponsored annually by Manchester Oil Fuel Institute.
Supported the establishment of full-time customs facilities and service at Bradley International Airport.
Supporting improved Penn Central freight service.
Supports fully the industrial development programming of the Manchester Community Development Foundation.
Co-published the 1971 Manchester map and directory.
Co-sponsored with the Town the 1970 Industrial Tour Day.
Provides Downtown Business District Christmas lighting decorations.
Co-sponsored publication of "Shoplifting Is A Crime!" brochure with Manchester High School's distributive education classes.
Supported the 1970 school bond referendum.

Today in History

By THE ASSOCIATED PRESS
Today is Tuesday, April 25, the 116th day of 1972. There are 250 days left in the year.
Today's Highlight in History
On this date in 1865, delegates of 45 nations met in San Francisco to organize the United Nations.
On This Date
In 1869, construction of the Suez Canal was formally begun.
In 1968, United States declared war on Spain.
In 1901, New York became the first state to require license for cars.
In 1917, China entered World War I against Germany.
In 1945, in World War II, U.S. and Soviet troops celebrated together when advance units linked up on a demilitarized bridge over the Elbe River at Torgau, Germany.
In 1969, the St. Lawrence Seaway was opened to shipping.
The Year's Ago
A U.S. Ranger spacecraft was on its way to the moon, but the unmanned vehicle's communications system was not functioning.

Fischetti



HE'S NO NIJINSKY, BUT GIVE THE KID TIME

25 APR 25

It Takes Two---Your Chamber and You

Join Our Growing Ranks Today

Manchester Chamber of Commerce

Manchester, Conn., 19____

I, or we, subscribe \$_____ annually to the Manchester Chamber of Commerce, effective the first day of _____ Payable in advance: Annually; Semi-Annually; and in consideration of this subscription being approved agree to pay the above stated sum EACH YEAR until WRITTEN RESIGNATION has been presented to the Board of Directors.

TYPE OF BUSINESS _____ Firm Name _____
 Business Address _____
 Authorized By _____ SIGNATURE

Tel. No. _____

Dues are deductible from Federal Income Tax as necessary business expense. Membership is selective and by invitation only. Please name the person who will hold the membership on reverse side of this card.

Why not take an ACTIVE part in your Chamber? Check one or more of the following committees in which you are interested.

- | | | |
|--------------------------------|-------------------------|--------------------------|
| Automotive Division | Industrial Development | Recreation |
| Better Business Bureau | Local Government | Retail Division |
| Congressional Action | Manufacturers' Division | Safety |
| Contractors' Division | Meetings | State Legislation |
| Convention & Tourist Promotion | Membership | Solicitation Control |
| Education | Personnel Committee | Taxation |
| Fuel Dealers' Division | Program of Work | Traffic & Transportation |
| Income Evaluation | Publicity | United Fund |
| | Publications | Urban Development |
| | Public Relations | |

This membership assigned to: _____

Board of Directors

1972 - 1973 OFFICERS
 John A. DeQuattro, President
 Walter A. Morrissey, Past President
 Alfred L. Perrault, First Vice President
 Edward M. Kenney, Second Vice President
 Robert L. Nelson, Treasurer
 Andrew Anasidji Jr., member-at-large
 Maury R. Brown, member-at-large
 Burl L. Lyons, member-at-large
 J. Grant Swank Jr., Executive Vice President

BOARD OF DIRECTORS
 Andrew Anasidji Jr., Vice President
 The Andrew Anasidji Company
 Allen F. Behnke, General Manager
 Bantly Oil Company
 Maury R. Brown, Director, Corporate Planning
 Lydall, Inc.
 Robert D. Charnas, President
 Manchester Memorial Hospital
 William J. Lennon, Director/Manager
 Watkins Funeral Home
 John A. DeQuattro, President
 J. D. Real Estate Company
 Edward M. Kenney, Administrator
 Manchester Memorial Hospital
 William J. Lennon, Director/Manager
 Watkins Funeral Home
 William Liggett, Vice President
 Red Lee Metal Finishing Co., Inc.
 Everett J. Livesey, President
 Savings Bank of Manchester
 Burl L. Lyons, Publisher
 Manchester Evening Herald
 Walter A. Morrissey, Vice President
 Hartford National Bank & Trust Company
 Robert L. Nelson, Vice President
 Connecticut Bank & Trust Company
 Roy C. J. Norman, Manager
 Hartford Electric Light Company
 Alfred L. Perrault, Manager
 Sears, Roebuck & Company
 Donald P. Richter, Attorney
 Paul R. Shultz, Administrator
 Manchester Motor, Inc.
 George Sankman, President
 Pligim Mills, Inc.
 Robert W. Weinberg, President
 Economy Electric Supply Co.
 Earl J. Wilson, Vice President and Secretary
 Wilson Electric Company, Inc.
 Roderick A. Wright, Owner
 Seven-Eleven Food Stores
 William L. Zimmermann, Vice President
 G. T. LaBonne & Associates, Inc.

Committee Chairmen

MANCHESTER CHAMBER OF COMMERCE
 Annual Meeting Committee:
 George T. LaBonne & Associates, Inc.
 155 Main St.
 642-1189
 City Beautiful Committee:
 Dr. Douglas H. Smith
 407 Woodbridge Street
 Bus: 642-1280; Res: 642-9678
 Downtown Committee Task Force:
 Robert Weinberg
 Economy Electric Supply Co.
 524 Main Street
 642-2820
 Drug Advisory Council:
 W. J. Godfrey Gourley
 Professional Management Consultants
 227 East Center Street
 642-2080
 Dues Evaluation Committee:
 Leo N. Juran
 Fairway Stores
 978 Main Street
 642-1717
 Education Committee:
 Mrs. Darden E. Haslett
 8 Truck Road
 642-2287
 Industrial & Commercial Development:
 William A. Moorhouse Co-chairman
 Hartford Natl. Bank & Trust Co.
 825 Main St.
 647-2018
 Roy C. J. Norman Co-chairman
 Hartford Electric Light Co.
 637 Main St.
 642-2121
 Legislative Committee:
 Walter A. Morrissey
 Hartford Natl. Bank & Trust Co.
 825 Main St.
 647-2018
 Roy C. J. Norman Co-chairman
 Hartford Electric Light Co.
 637 Main St.
 642-2121
 Legislative Committee:
 Parking & Traffic Committee:
 Irving L. Bayer
 Main & Eldridge Co.
 218 Parker St.
 642-6286
 Public Affairs Committee:
 Everett J. Livesey
 Savings Bank of Manchester
 222 Main St.
 642-1700
 Solicitation Control Committee - anonymous
 Town Affairs Committee:
 Robert D. Charnas
 National Media Corp./WVFP
 P.O. Box 1230
 642-1230
 Urban Development Committee:
 Richard S. Lawrence
 Lawrence Architects
 271 Porter St.
 642-2161

Congratulations

Although we're only twenty-eight years young — we look up to and admire the wonderful seventy-one year record of Manchester's fine, outstanding Chamber of Commerce!

NASSIFF ARMS CO. "YOUR HOUR OF SPORTS"

501 MAIN STREET IN DOWNTOWN MANCHESTER

Congratulations

Time has a way of flying by, but we at Moriarty Brothers are never too busy to pause for a moment and offer our warmest congratulations to the Manchester Chamber of Commerce on their 71st Anniversary!

MORIARTY BROTHERS

On The Level at Center and Broad Street For Over 38 Years!

PLEGGED TO PROGRESS

Your Manchester Chamber of Commerce

We're Proud to be Associated With Your Chamber of Commerce

CONNECTICUT PETROLEUM MARKETERS ASSOCIATION

Bantly Oil Co., Inc.
 Fogarty Bros. Inc.
 W. G. Glenney Co.
 New England Tank Lining of Conn.
 Moriarty Bros.
 Whiting Corporation
 L. T. Wood Co., Inc.



The policies of the Manchester Chamber are set by the 20-member Board of Directors. Getting together for the cameraman following a business session are from left, Alfred L. Perrault, first vice president; Robert D. Charnas, director; Edward M. Kenney, second vice president; William J. Lennon, director; Andrew Anasidji Jr., director; and Roy C. J. Norman, director. Seated is past president Walter A. Morrissey.



Newly-elected directors of the Manchester Chamber confer with Walter A. Morrissey, immediate past president. From the left are Robert Weinberg, Burl L. Lyons, Morrissey, Bill Zimmermann and William Liggett.

It Takes Two---Your Chamber and You

Manchester Chamber Leaders



John A. DeQuattro, 1972-73 President
 Robert L. Nelson, treasurer
 Maury R. Brown
 Everett J. Livesey
 Donald P. Richter
 Earle J. Wilson

it takes II

Your Chamber of Commerce and YOU

Chamber Members

- (Continued From Page 8)
- U.S. Glass Fibre Co.
 PRINTERS & PUBLISHERS DIVISION
 Allied Printing Services Inc.
 Hartford Courier
 Hartford Times
 Manchester Evening Herald
 Print-Mark Co.
 SRK Town Flyer
- PROFESSIONAL
 Robert J. Aleshury M.D.
 Thomas B. Akopyants M.D.
 Howard Baldwin M.D.
 Philip Bayer Esq.
 Edward Bauer M.D.
 Charles A. Berger, C.P.A.
 David M. Caldwell Jr. M.D.
 Crossfield Convalescent Hospital
 William E. Fitzgerald Esq.
 Louis T. Foley D.D.S.
 Amos R. Friend M.D.
 Harold W. Garrity Esq.
 Paul J. Grobert Esq.
 Wesley C. Gray Esq.
 Thomas M. Healy M.D.
 Holmes Funeral Home
 Frank R. Horton M.D.
 Charles E. Jacobson Jr. M.D.
 Joel R. Janssen Esq.
 Robert R. Kenney M.D.
 Eugene W. Kelly Esq.
 John D. Labelle Esq.
 Arnold Lawrence A.L.A.
 George C. Lesmer Esq.
 Manchester Convalescent Home Inc.
 Manchester Manor Rest Home
 Manchester Memorial Hospital
 Paul R. Merie Esq.
 Meadows Nursing Home Inc.
 Gerald R. Miller M.D.
 Donald Morrison M.D.
 Winfield Meyer M.D.
 John R. Mirvick Esq.
 Harvey Pestel M.D.
 Leon Potvinne Esq.
 Professional Management Consultants
 Adam Rhodes C.P.A.
 Donald P. Richter Esq.
 Douglas J. Roberts Jr. M.D.
 John B. G. Rotzler Esq.
 Walter M. Richards M.D.
 Douglas H. Smith M.D.
 Frederick W. Spaulding D.M.D.
 Phillip E. Sumner M.D.
 John E. Tierney Funeral Home
 Watkins-West Funeral Home
 C. Wendell Wetherham M.D.
- PUBLIC UTILITIES DIVISION
 Connecticut Natural Gas Corp.
 Hartford Electric Light Co.
 Manchester Water Co.
 Southern New England Telephone Co.
- RADIO DIVISION
 National Media Corp./WVFP
- RESTAURANT DIVISION
 Brass Key Inc.
 Burger King
 Dev's Drive-In
 Flano's Restaurant
 Hardee's Restaurant
 Manchester Party Queen
 Manchester Foods, Inc.
 Mr. Steak
 Shady Glen Ice Cream Co.
 Walsh's McDonald Drive-In
 Willie's Steak House
- RETAIL DIVISION
 Adam's Apple
 Adams Jewelers
 Anderson Little
 Arthur Drug Store
 Authenticity I
 Silas Furniture Co.
 J. T. Blisk Co.
 Bantley's
 Calder's Inc.
 Card Gallery
 Chantal Village Store
 Corvi's Costume
 Davidson Leventhal, Inc.
- Economy Electric Supply Co.
 Fabric Fair
 Fairway Stores
 First National Stores
 Forest Package Store
 Flower Facilities
 Fowler Opticians
 Glazier's Corner Shop
 Glenshaw's Men's Shop
 Grand Union Co.
 W.T. Grant Co.
 Harrison's Stationery
 Haywood-Candale - Arnoldson
 Health Food Farm
 Highland Park Market
 House & Hale Co.
 Johnson Paint Co.
 Kravitz Florist
 Land 'O Fashion
 Mary Lewis
 Left the Lash Gift Shop
 Leggett's Retail Drug Store
 Loring Studios
 Manchester Carpet Center
 Manchester Pet Center
 Manchester Hardware & Supply
 Mart-Made
 Marlow's
 Martin Ltd.
 Mary Lewis
 Thom McAn Shoe Store
 Medical Pharmacy
 Michaels
 Music Shop
 Nassiff Arms
 Negal Camera & Photo Shop
 Nichols Manchester Tire Co., Inc.
 Optical Style Bar
 Paul's Paint & Wallpaper
 Pathmark Supermarket
 Peggy Ann Shopp, Inc.
 Pentland the Florist
 Pilgrim Mills, Inc.
 Pinewood Furniture Co.
 Pottier's Inc.
 Reed's Inc.
 Regal Men's Shop
 S & H Green Trading Stamp
 Scherrie Galleries
 Seely's Pet Center
 Sears-Roebuck & Co.
 Seven-Eleven Food Stores
 Shor's Jewelers
 Simmons Shoes
 Stanek Electro-Lab
 Stop & Shop Supermarkets
 Frank Torres (Locker Plant at I. T. Center)
 Top Notch Market
 Treasury Shop Inc.
 Turnpike TV & Appliances
 Tweed's Inc.
 Watkins Brothers Inc.
 Western Book Store
 Western Pharmacy
 Wilton's Gift Shop
 Youth Center, Inc.
- SERVICES DIVISION
 Carriage House Sales, Inc.
 European Health Spa
 General Service Inc.
 Globe Travel Agency
 Labonne Travel World
 Magic Mirror Beauty Studio
 Manchester Barber Shop
 Mercury Travel Agency Inc.
 Fernon in Person
 Stan's TV Service
 State Typewriter Service

Our Town, Manchester

EDITOR'S NOTE: The following is by J. Grant Swank Jr., executive vice president of the Manchester Chamber of Commerce. The text accompanies a slide program which Swank has presented to many clubs and organizations and which is available by contacting the chamber. However, we feel the public will find the following material on the program of work accomplished and goals of the chamber of particular interest. At the same time, it will acquaint newcomers with what Manchester has to offer.

J. GRANT SWANK JR.
 This is our town—Manchester, covering an area of 27 square miles, having a population of 50,000, the 17th largest city in the State of Connecticut.
 Manchester, the City of Village Charm. This is where we work, where we live, worship and sleep, and where our children attend school.
 Manchester is a pleasant place to live and work partly because of its scenic beauty such as its four large parks and 27 parkettes which cover approximately 180 acres of land devoted exclusively to parks and recreation areas. An enjoyable place to have a picnic or for a leisure drive is the scenic Chase Mountain area in the southeastern region of the town.
 Manchester is home to many people. Within the town there are 15,300 dwelling units. Each year an average of 115 single family units have been built since 1960. Some of the homes are exceedingly spacious, others are exceptionally comfortable, still others are the old style home made over to fit in with modern living, and other dwellings are quite comfortable with the medium or lower income bracket range.
 Apartment building has taken on increased dimensions within Manchester. In 1960, 12 new apartment units were built. In 1964, 208 new apartment units, and two years ago over 400 new apartment units were built within Manchester. Most of these units are styled with the "City of Village Charm" flavor with the rental range enjoying a flexible spectrum.
 Manchester is unique in its accent on worship. There are 29 sanctuaries, including a variety of denominations such as Congregational, Episcopal, Roman Catholic, Polish National Catholic, Assembly of God, Lutheran, Nazarene, Methodist, Baptist and one newly constructed, modern styled synagogue, Temple Beth Shalom.
 No doubt you have children attending Manchester schools. Whether or not, as a conscientious citizen of our community,

MANCHESTER'S OLDEST FINANCIAL INSTITUTION

SAVINGS & LOAN Association

We can do it better together

Where you find a thriving town or city, you find an active Chamber of Commerce, and vice versa. Your Chamber is where business and professional competitors meet in order to investigate better ways of serving you better. "IT TAKES TWO..." Your Manchester Chamber of Commerce and You. Manchester will be a better town for you joining the Chamber. Do it today.

1007 MAIN ST., MANCHESTER — 649-4588
 ROUTE 31, COVENTRY — 742-7321

"It takes two, your Manchester Chamber of Commerce and you."



The Main Street Guild is proud to join with the Manchester Chamber of Commerce in building an even better community and give our wholehearted support to the Chamber of Commerce. We urge all citizens to take an active interest in their Chamber of Commerce.

DOWNTOWN MANCHESTER . . .

"A Great Place To Shop"

Main Street Guild
 Downtown Manchester

780 Main Street in Downtown Manchester
 "Member of The Main Street Guild"
 Where You're A Friend, As Well As A Customer!

25

APR

25

It Takes Two---Your Chamber and You

Chamber Projects



Walter A. Morrissey, past Chamber president 1971-72, sets the example for Chamber members in kicking off the 1972 Summer Shape-Up Anti-Litter campaign in the community. The effort focused not only on private property, both commercial and residential, but also on public roadways and parks.



Overseeing the planting of a Memorial Tree on the Keeney Street School property, a chamber project, are Dr. Charles E. Jacobson, project chairman; Ernest Tureck, Manchester Park Dept. superintendent, and Edward H. Timbrell, school principal.

Our Town, Manchester

(Continued From Page 9)

take in the opportunities of the Manchester Country Club with its 18 hole golf course, splendid dining area and outdoor pools. The Country Club is a fun thing either way for the individual or the family.

Keeping our town going governmentally is the activity that goes on at our New England styled town hall, Manchester has a Council-Manager form of government under special charter.

Just a stone's throw from the Town Hall is the main branch of the Manchester Post Office which has four incoming and two outgoing regular and air-mail schedules weekdays.

The Manchester Police Department consists of 76 regulars, 13 radio-equipped cars and two emergency trucks, all ready to maintain the peace of our City of Village Charm.

Manchester also has an excellent Fire Department consisting of six companies with 225 volunteers and 60 full time men.

Manchester provides the residence of a State Armory located centrally on Main Street.

We are justly proud of our Manchester Memorial Hospital which has a total of 508 beds and a staff of 124 physicians, surgeons and dentists. The hospital is a leader in the country with its progressive, self-care and comprehensive facilities.

To keep us informed, particularly on the local scene, there is the Manchester Evening Herald with a daily circulation of 14,000. Manchester's radio station is WJMF, 1230 on your dial.

One of Manchester's prides is its variety of clubs and meeting center. There are many clubs such as Civitan, Kiwanis, Lions, Rotary, UMICO, Fine Arts Association, Little Theatre, Newcomers Club, Junior Women's Club, Jaycees, Masonic Order, Knights of Columbus, B'Nai B'rith, Gilbert & Sullivan Workshop, Manchester Garden Club, Personal Planters Garden Club, to name only a few.

Five financial institutions are now available to serve you: Manchester State Bank, Connecticut Bank & Trust Co., Hartford National Bank & Trust Co., Manchester Savings & Loan Assn., and the Savings Bank of Manchester.

Manchester is an outstanding shopping center serving 250,000 people. Manchester stands as 10th largest in retail sales. The three main shopping areas include the downtown business district, the Manchester Shopping Parkade and Burr Corner.

Manchester is also a manufacturing center with a total of 88 firms and a total payroll of \$1.1 million annually. The industries employ an estimated 4,000 men and women.

Principal manufactured products include velvet, plush material, drills, paper, clutches, metal products, electric motors, feed electrical instruments, women's tailored suits and coats, paper boxes, toys, parachutes, nursery stock, experimental machining tool and die, jet missile and aircraft components, blenders, mixers, hair dryers, electric can openers, pre-cast concrete panels and fiberglass plastic molds.

Manchester stands as the 28th largest in manufacturing in Connecticut. Serving industry locally is one main railroad line of Midland Division, Penn Central Co.

The Manchester Chamber of Commerce appreciates this town. Furthermore, the Chamber desires to enroll as many persons as possible within its activities in order to make our town the best possible place in which to live and work.

The Manchester Chamber is an accredited Chamber, accredited by the Chamber of Commerce of the United States.

The Chamber has two roles: Serving its members and exciting the membership to serve the community through the Chamber program.

Part of the services to Chamber members include: Solicitations control, regular publications such as the monthly Chamber Made, Industrial Directory of Manchester, Community Monograph, Directory of

Clubs and Associations, new-comers list and sales tax cards; answering a variety of requests concerning local business and town matters. The Chamber serves as the Manchester Better Business Bureau; provides shoplifters' prevention with the (tag-along) system; community Christmas lighting; community radio watch; and social functions such as the annual banquet.

The Chamber is also concerned about keeping industry in Manchester such as the efforts which were made in finding better accommodations within the town. Pioneer Parachute Co., and efforts for industrial expansion through such endeavors as the Manchester Industrial Park.

To service the particular interests of Chamber members, there are three divisions: The Retail Division, Oil Fuel Institute and The Contractors Division.

Retailing programming includes monthly executive sessions, membership seminars focusing on retailing matters of interest, liaison with the Distributive Education Departments of the Manchester High School and the Manchester Community College, as well as legislative lobbying on state and national levels.

The Oil Fuel Institute has maintained as its community service endeavor providing various furnishings for the Manchester Teen Center. The Institute also contributes annually to the sponsorship of a Little League team. For its members, the Institute provides such services as regional publicity.

The Contractors Division has maintained as its community service the erection of the Kennedy Day Camp Shelter for Retarded Children. This division erected a 2-room addition to the existing structure. This facility provides summer recreation and learning for such handicapped boys and girls.

Naturally the facets of community betterment are supported by the local business organization. For example, North Manchester urban development, enjoys the completion of such projects as housing for the elderly.

The Chamber has been especially active in such endeavors. Route 1-84 has received much Chamber attention due to the dimension which it has upon all aspects of the town.

The Manchester Chamber of Commerce has been one of the most active community agencies supporting Manchester Community College.

Keeping our City of Village Charm beautiful is another year-round project of the Chamber's City Beautiful Committee which includes such programs as the annual clean-up emphasis, bumper sticker reminders, public building anti-litter displays, service station beautification campaigns, litter receptacle provisions, new business landscaping recommendations, parking area plantings, Arbor Day seedling plantings, sponsorship of Memorial tree plantings, emphasis on the saving of trees in new residential areas, garden plantings, which has culminated in the Chamber receiving for four years the Distinguished Achievement Award in the National Cleanest Town Achievement Award Contest.

The Chamber was also instrumental in seeing the elimination of old street signs and the erection of new street signs.

Your membership was also instrumental in seeing that numerous town directional signs were placed within the outlying districts of Manchester.

Particularly of benefit to industrial development is the Chamber supported Parker-Oakland Street Connector, now known as Sheldon Road.

Your Manchester Chamber of Commerce was instrumental in removing the parking meters from the downtown business district allowing for free parking to customers.

The Chamber is currently pushing for road improvements and better traffic flow at congested intersections.

Conservation of scenic areas is supported by the Chamber in its encouragement for scenic betterment of North Manchester's Union Pond.

The Manchester Chamber spearheaded the establishment of the Manchester Historical Society.

The Chamber originated the United Fund emphasis within the town.

Your Chamber originated the Manchester Scholarship Foundation which funnels into one agency scholarships provided by a variety of sources within Manchester. These awards are presented annually to deserving students.

Many of your neighbors are members of the Manchester Chamber of Commerce. These members include persons in retailing, apartments and hotels, amusement and entertainment, contractors, lawyers, physicians, insurance men, you name it.

We have two reasons for being: One, to better serve one another and, two, to better serve the community in which we live through such betterment projects as the Chamber established Drug Advisory Center, opened March 2, 1970.

There are 225 members in the Manchester Chamber. The organization maintains a three-person staff. The policies of the Chamber are set by the 20-member Board of Directors.

We invite you to become a member of the Manchester Chamber of Commerce, not just to be a member, but to receive Chamber services and benefits and in turn serve your community. The business voice means a lot here. We expect to keep that voice loud, clear, intelligent and highly respected. Frankly, we need your help. We hope you will join us. For membership information, contact the Chamber, 227 East Center St.

The Chamber is currently pushing for road improvements and better traffic flow at congested intersections.

Conservation of scenic areas is supported by the Chamber in its encouragement for scenic betterment of North Manchester's Union Pond.

The Manchester Chamber spearheaded the establishment of the Manchester Historical Society.

The Chamber originated the United Fund emphasis within the town.

Your Chamber originated the Manchester Scholarship Foundation which funnels into one agency scholarships provided by a variety of sources within Manchester. These awards are presented annually to deserving students.

Many of your neighbors are members of the Manchester Chamber of Commerce. These members include persons in retailing, apartments and hotels, amusement and entertainment, contractors, lawyers, physicians, insurance men, you name it.

We have two reasons for being: One, to better serve one another and, two, to better serve the community in which we live through such betterment projects as the Chamber established Drug Advisory Center, opened March 2, 1970.

There are 225 members in the Manchester Chamber. The organization maintains a three-person staff. The policies of the Chamber are set by the 20-member Board of Directors.

We invite you to become a member of the Manchester Chamber of Commerce, not just to be a member, but to receive Chamber services and benefits and in turn serve your community. The business voice means a lot here. We expect to keep that voice loud, clear, intelligent and highly respected. Frankly, we need your help. We hope you will join us. For membership information, contact the Chamber, 227 East Center St.

The Chamber is currently pushing for road improvements and better traffic flow at congested intersections.

Conservation of scenic areas is supported by the Chamber in its encouragement for scenic betterment of North Manchester's Union Pond.

The Manchester Chamber spearheaded the establishment of the Manchester Historical Society.

The Chamber originated the United Fund emphasis within the town.

Your Chamber originated the Manchester Scholarship Foundation which funnels into one agency scholarships provided by a variety of sources within Manchester. These awards are presented annually to deserving students.

Many of your neighbors are members of the Manchester Chamber of Commerce. These members include persons in retailing, apartments and hotels, amusement and entertainment, contractors, lawyers, physicians, insurance men, you name it.

We have two reasons for being: One, to better serve one another and, two, to better serve the community in which we live through such betterment projects as the Chamber established Drug Advisory Center, opened March 2, 1970.

There are 225 members in the Manchester Chamber. The organization maintains a three-person staff. The policies of the Chamber are set by the 20-member Board of Directors.

We invite you to become a member of the Manchester Chamber of Commerce, not just to be a member, but to receive Chamber services and benefits and in turn serve your community. The business voice means a lot here. We expect to keep that voice loud, clear, intelligent and highly respected. Frankly, we need your help. We hope you will join us. For membership information, contact the Chamber, 227 East Center St.

acts as housing for the elderly. The Chamber has been especially active in such endeavors. Route 1-84 has received much Chamber attention due to the dimension which it has upon all aspects of the town.

The Manchester Chamber of Commerce has been one of the most active community agencies supporting Manchester Community College.

Keeping our City of Village Charm beautiful is another year-round project of the Chamber's City Beautiful Committee which includes such programs as the annual clean-up emphasis, bumper sticker reminders, public building anti-litter displays, service station beautification campaigns, litter receptacle provisions, new business landscaping recommendations, parking area plantings, Arbor Day seedling plantings, sponsorship of Memorial tree plantings, emphasis on the saving of trees in new residential areas, garden plantings, which has culminated in the Chamber receiving for four years the Distinguished Achievement Award in the National Cleanest Town Achievement Award Contest.

The Chamber was also instrumental in seeing the elimination of old street signs and the erection of new street signs.

Your membership was also instrumental in seeing that numerous town directional signs were placed within the outlying districts of Manchester.

Particularly of benefit to industrial development is the Chamber supported Parker-Oakland Street Connector, now known as Sheldon Road.

Your Manchester Chamber of Commerce was instrumental in removing the parking meters from the downtown business district allowing for free parking to customers.

The Chamber is currently pushing for road improvements and better traffic flow at congested intersections.

Conservation of scenic areas is supported by the Chamber in its encouragement for scenic betterment of North Manchester's Union Pond.

The Manchester Chamber spearheaded the establishment of the Manchester Historical Society.

The Chamber originated the United Fund emphasis within the town.

Your Chamber originated the Manchester Scholarship Foundation which funnels into one agency scholarships provided by a variety of sources within Manchester. These awards are presented annually to deserving students.

Many of your neighbors are members of the Manchester Chamber of Commerce. These members include persons in retailing, apartments and hotels, amusement and entertainment, contractors, lawyers, physicians, insurance men, you name it.

We have two reasons for being: One, to better serve one another and, two, to better serve the community in which we live through such betterment projects as the Chamber established Drug Advisory Center, opened March 2, 1970.

There are 225 members in the Manchester Chamber. The organization maintains a three-person staff. The policies of the Chamber are set by the 20-member Board of Directors.

We invite you to become a member of the Manchester Chamber of Commerce, not just to be a member, but to receive Chamber services and benefits and in turn serve your community. The business voice means a lot here. We expect to keep that voice loud, clear, intelligent and highly respected. Frankly, we need your help. We hope you will join us. For membership information, contact the Chamber, 227 East Center St.

The Chamber is currently pushing for road improvements and better traffic flow at congested intersections.

Conservation of scenic areas is supported by the Chamber in its encouragement for scenic betterment of North Manchester's Union Pond.

The Manchester Chamber spearheaded the establishment of the Manchester Historical Society.

The Chamber originated the United Fund emphasis within the town.

Your Chamber originated the Manchester Scholarship Foundation which funnels into one agency scholarships provided by a variety of sources within Manchester. These awards are presented annually to deserving students.

Many of your neighbors are members of the Manchester Chamber of Commerce. These members include persons in retailing, apartments and hotels, amusement and entertainment, contractors, lawyers, physicians, insurance men, you name it.

Dr. Homer D. Babbidge, Jr.



Dr. Homer D. Babbidge, Jr.



George T. LaBonne

Solving community problems takes two. The Chamber of Commerce and YOU.

Annual Meeting Set for Wednesday

The 71st annual dinner meeting of the Manchester Chamber of Commerce is set for Wednesday, April 26, at Fiano's Restaurant, Route 6 & 4A, Bolton. The social hour will begin at 6 p.m. and dinner is set for 7 p.m.

Annual Meeting Committee Chairman George T. LaBonne will be the master of ceremonies. Dr. Homer Babbidge, president of the University of Connecticut, will be the featured speaker.

The highlight of the evening will be the presentation of the "M" Award to a deserving citizen of the community. Last year the award was given to William H. Smith, chairman of the board, Manufacturing Co., Inc. Making the presentation Wednesday will be the immediate past president of the chamber, Walter A. Morrissey.

Reservations for the meeting may be made by contacting the Chamber of Commerce, 227 East Center St.

From One Gem to Another, Congratulations to our fine Chamber of Commerce!

Jewelers and Silversmiths Since 1899

Michaels
908 Main St., Manchester

**IT TAKES TWO,
YOUR MANCHESTER
CHAMBER OF
COMMERCE AND YOU**

The Multiple Listing Service of Manchester in cooperation with the Manchester Board of Realtors takes this opportunity to commend the Manchester Chamber of Commerce on its many community betterment projects. We too are confident that the future holds much promise for Manchester.

The Multiple Listing Service of Manchester
In Cooperation With The
Manchester Board of Realtors Inc.

MANCHESTER CHAMBER OF COMMERCE

**It Works For You,
AND
It's A Better Town
When You Belong!**

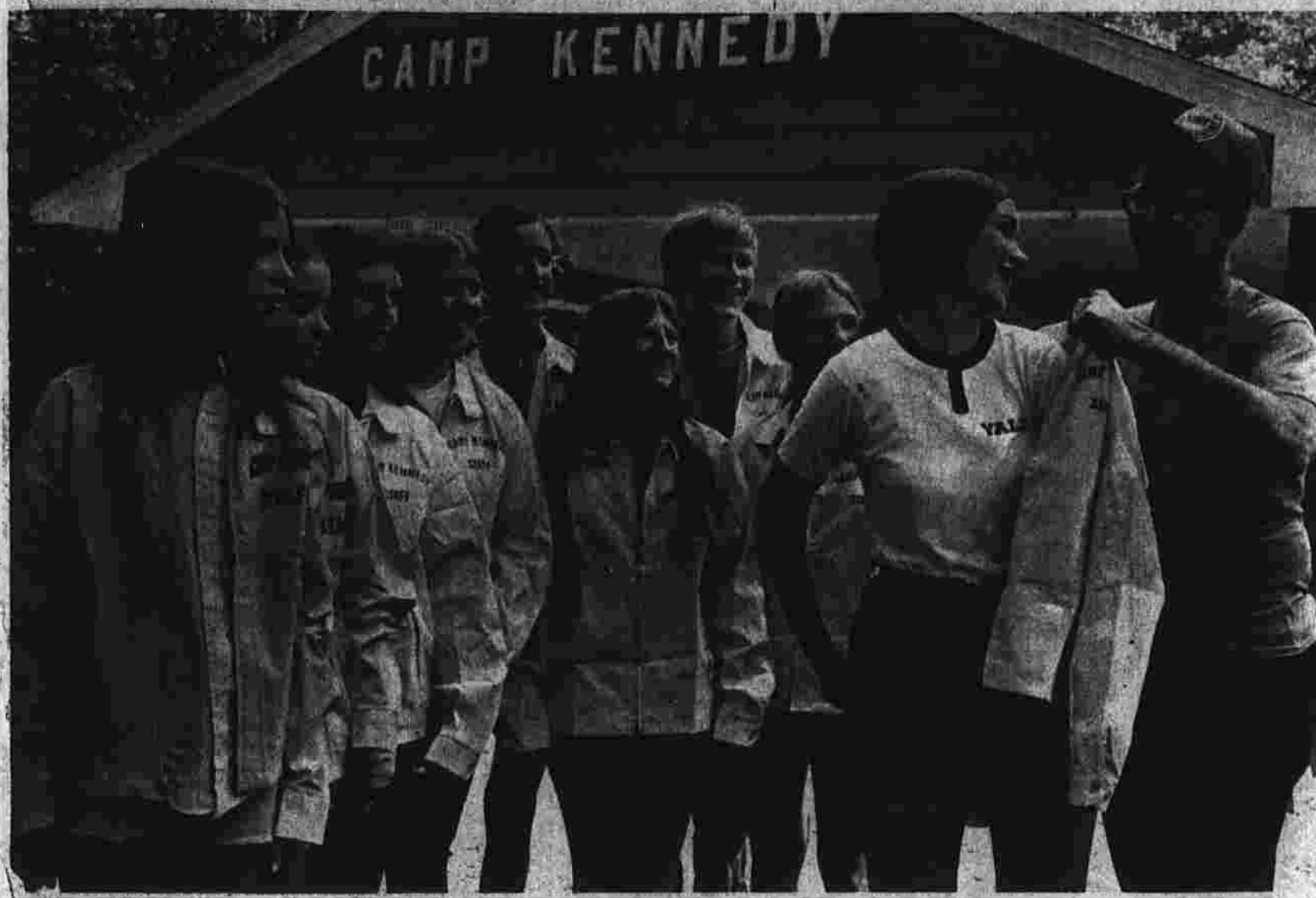
Harrison's Stationers SINCE 1945
810 MAIN STREET IN DOWNTOWN MANCHESTER

IT TAKES TWO

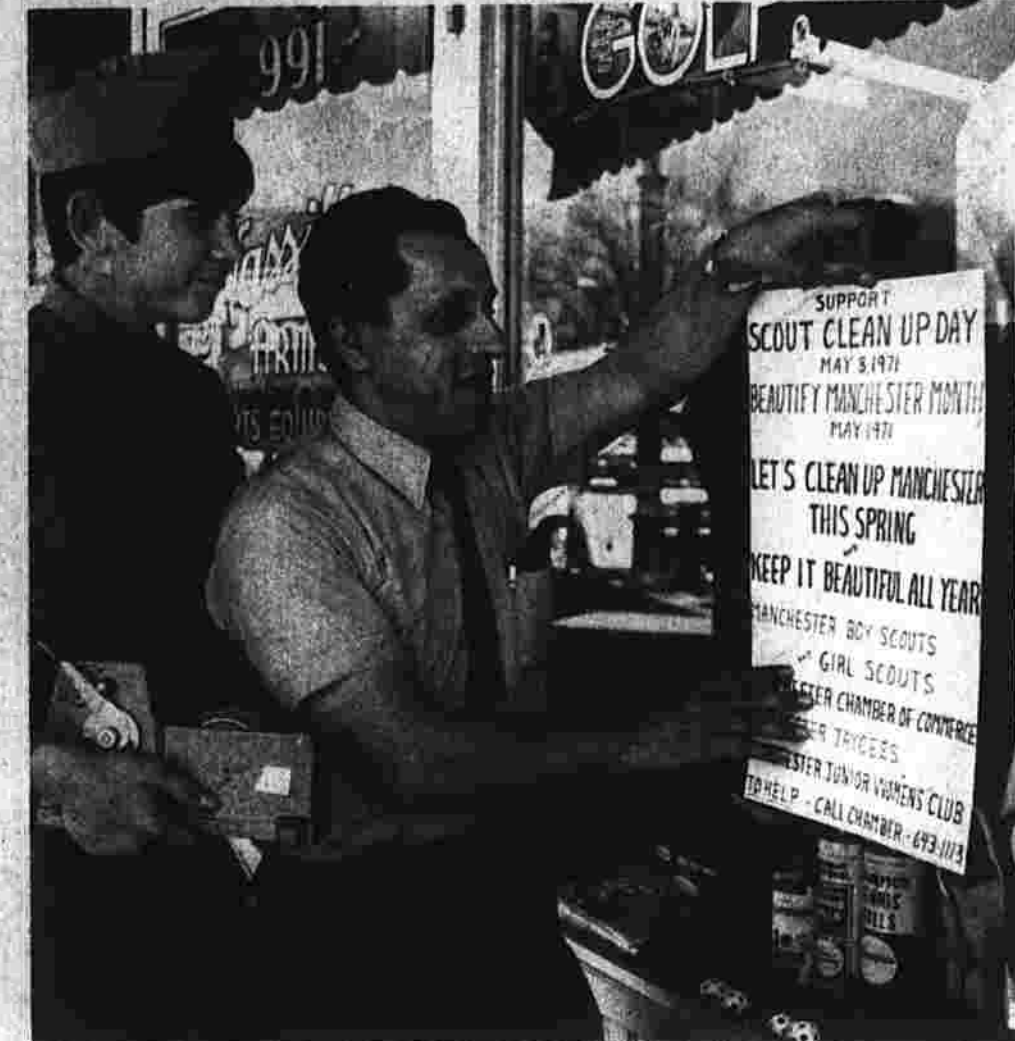
the Chamber of Commerce and YOU to make Manchester a better place for all of us to live and work in . . .

ROBERT J. SMITH, Inc.
INSURANCE and REAL ESTATE
"If It's Worth Owning, It's Worth Insuring!"
903 MAIN STREET IN DOWNTOWN MANCHESTER

It Takes Two---Your Chamber and You



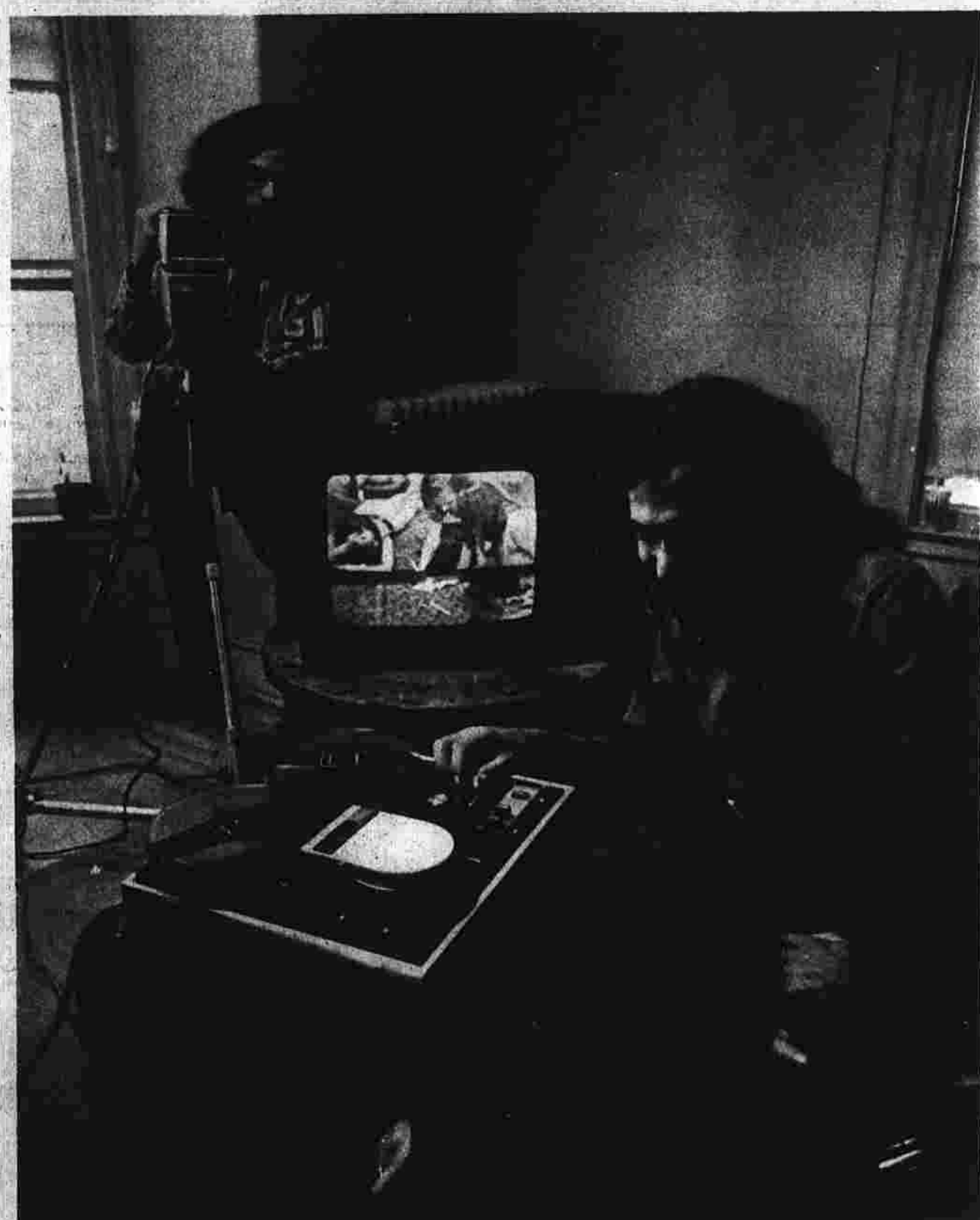
Chamber sub-divisions such as the Contractors Division have worked for community betterment through such endeavors as the division's creation of an \$8,000 shelter at the Kennedy Day Camp for Exceptional Children. The shelter provides an enclosure for crafts, snacks and storage of sports equipment and supplies.



Frederick G. Nassiff lends a helping hand to the local scout units as boys and girls cooperate with the Chamber in the annual Scout Clean-Up Day. This year the event is set for Saturday, May 6, with Burger King providing hamburger lunches for all participating scouts and leaders who registered prior to the Clean-Up Day with the chamber office.



Public and parochial sixth graders in Manchester each year. In conjunction with the tree plantings have been the recipients of evergreen seedlings for their own plantings in celebration of Arbor Day.



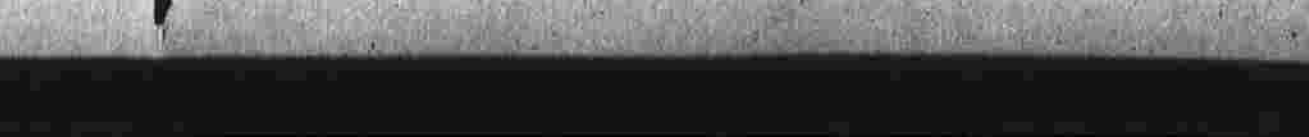
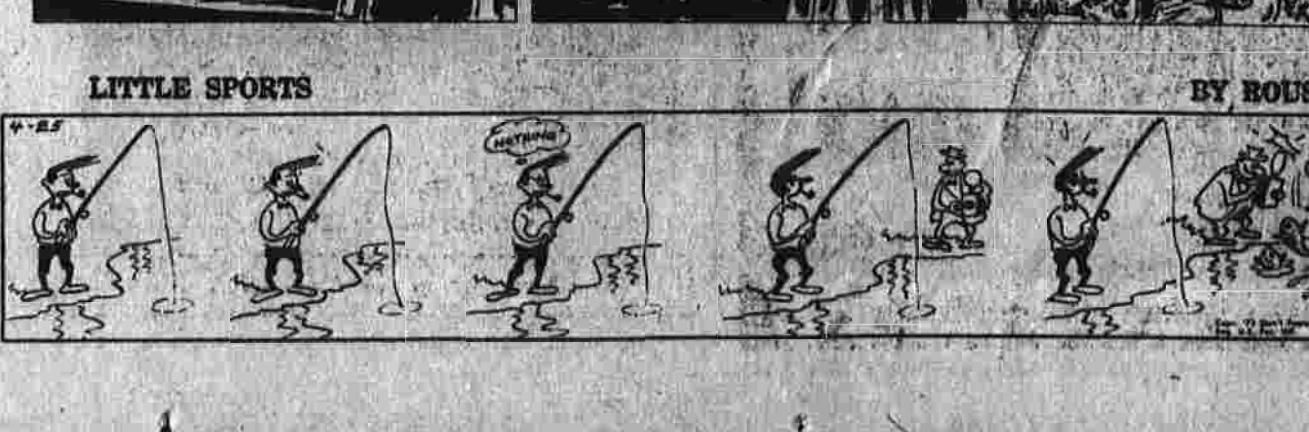
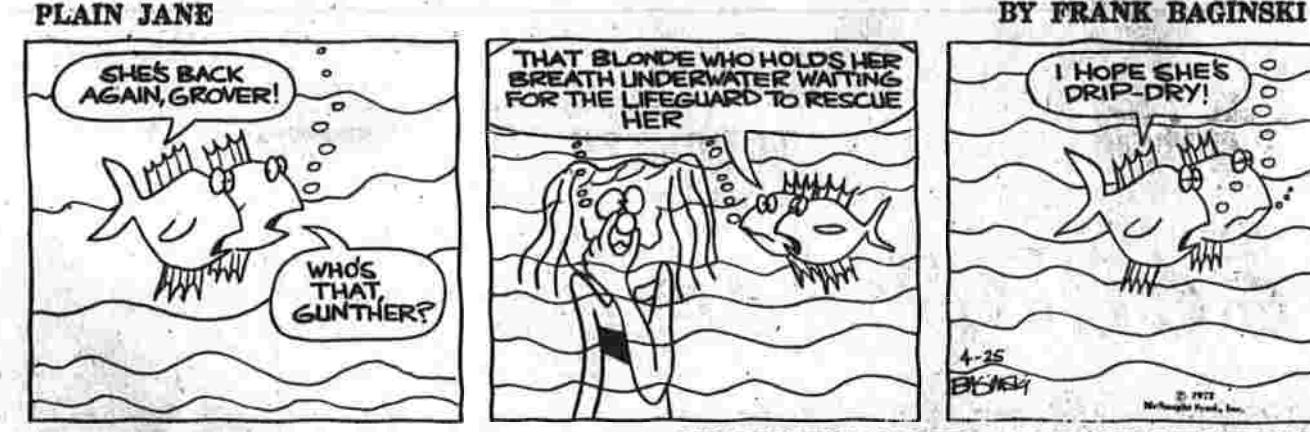
The chamber established the local Drug Advisory Center under the sponsorship of the Drug Advisory Council composed of representatives of the community's major segments including education, clergy, police, physicians, business, government, hospital administration and pharmacists. The center opened March 2, 1970, with Mark H. Swerdlow as director.

IT TAKES TWO...

**the Chamber of Commerce
and YOU!**

As well as actively supporting the creation of a Salters Pond park for recreation, the Chamber has backed the conservation and aesthetic improvements of Manchester's Union Pond as part of the North End Renewal Program.

25 APR 25



The Herald Angle

By EARL YOST Sports Editor
Camera Would Be Useful
There's something about long distance runners. They just seem to go on and on, running those 26 miles, 35-year marathons.

Sharman NBA Coach-of-the-Year

Easy Winner In Balloting Of Writers
NEW YORK (AP)—Bill Sharman, whose Los Angeles Lakers won a record 69 games during the regular season, was named Coach of the Year in the National Basketball Association today.

Rich Guerin Named G.M. With Hawks

ATLANTA (AP)—Rieho Guerin, dean of National Basketball Association coaches, has a new title and a new job today. The new Atlanta Hawks general manager has to find a new Hawks coach.

Assault and Battery Weapon for Nets

UNIONDALE, N. Y. (AP)—Who said crime doesn't pay? The New York Nets used a little assault and battery against Virginia Monday night, and came away with the victory over the Squires.

Herold Box Letters

For Information
THE HERALD will not disclose the names of persons who have written letters to the editor unless they request that their identity be published.

BERRY'S WORLD BREAKFAST FOODS



Business Services 13

CARPENTER—Rec rooms, cabinets, remodeling, odd jobs, reasonable rates. 645 Cedar Ridge Drive, Glastonbury, 645-2880.

Business Opportunity 28

THRIVING PIZZA shop in the center of town, well established, good equipment, good lease. Call Bill Wood at T. J. Crockett, Realtors, 645-1971.

Help Wanted-Female 35

WOMAN to care for semi-invalid in home, central location, 645-4348.

Reifers on Tour Without Portfolio

NEW YORK (AP)—After driving a car for 50,000 miles this year, reifers know how tough it is to break into the PGA golf tour and go after some of that \$7 million purse money. He may never do it again.

Miracle Tip Cops Feature At Yonkers

YONKERS, N.Y. (AP)—"Miracle Tip," the highest percentage of over 100 at a cost of \$117,000, overlook the 7.5-foot "Ban Hammer" in the stretch to win Monday night's first \$10,000 division of the 35th Sullivan Stakes by Tom and Dan.

Los and Found

FOUND—Black male, Labrador retriever, contact Owner, Contact Owner, 645-7846.

Celts Under New Owners Once Again

BOSTON (AP)—For the third time in seven years, the Boston Celtics are under new ownership.

Household Services 13-A

REWEAVING of burnt, moth-bitten, sippers repaired. Odd jobs, reasonable rates. 645 Cedar Ridge Drive, Glastonbury, 645-2880.

Painting - Papering 21

RICHARD E. MARTIN, Full professional painting service, interior-exterior. Free estimates. 645-1411.

Help Wanted-Male 36

MAN FOR various outdoor work around construction, also some part-time. Phone after 6 p.m., 645-9644.

Braves Down Three Games In Series with Voyageurs

HALIFAX (AP)—The Boston Braves, down 3-0 in games in their American Hockey League Eastern Division playoff series with the Nova Scotia Voyageurs, now face a make-or-buy decision.

Tonight's Game Major Concern For Bruin Coach

ST. LOUIS (AP)—"Right now, Tuesday night's that's the game," said Tom Johnson, the coach of the powerful Boston Bruins.

Pastel Sets Pace In Racquet Victory

Captain Ross Pastel led the Manchester High tennis team to an opening victory yesterday afternoon over Platt High of Meriden, 4-3, in the annual CCIL tennis tournament.

Wet Grounds Cut Slate

Although two other high school games were slated for yesterday, the wet grounds have managed to get a game in, as they defeated Windsor Locks, 8-1.

Business Opportunity 28

MANUFACTURER'S REPRESENTATIVE NEEDED
Sixty-Year Old, Multi-Million Dollar Company dealing in automobile products, needs distributor representative to service company secured retail and industrial accounts.

Business Opportunity 28

SALESWOMAN—Pilgrim Mills Fabric Department needs a saleswoman for a mature woman full-time also part-time evenings. Apply Pilgrim Mills, 84 Oakland Street, Manchester.

Business Opportunity 28

VERY profitable, easy to run restaurant, A-1 location, work for yourself with a small investment. Good vending machine route. Takes one day to service, more machines can be added. Small established manufacturing company, lots of potential. Wholesale business, large cash flow.

Shift Marathon

The Yonkers Marathon, a fixture since 1958, will be staged and sponsored by the Yonkers Raceway in conjunction with the Yonkers Jaycees June 11.

Sports Dial

1973 Mets vs. San Diego Padres
1973 Winner in Debate
SALLEN, M.L. (AP)—Red Rippe (43), making his first start as a pitcher, was the victor when he won the season's first game, a 4-1 victory over the Boston Red Sox.

Wet Grounds Cut Slate

The Hall High contest with Rockville was postponed to tomorrow at Memorial Field due to wet grounds and the Rockville-Windsor Locks game was postponed to a later date.

Wet Grounds Cut Slate

Although two other high school games were slated for yesterday, the wet grounds have managed to get a game in, as they defeated Windsor Locks, 8-1.

Business Opportunity 28

VERY profitable, easy to run restaurant, A-1 location, work for yourself with a small investment. Good vending machine route. Takes one day to service, more machines can be added. Small established manufacturing company, lots of potential. Wholesale business, large cash flow.

Business Opportunity 28

VERY profitable, easy to run restaurant, A-1 location, work for yourself with a small investment. Good vending machine route. Takes one day to service, more machines can be added. Small established manufacturing company, lots of potential. Wholesale business, large cash flow.

Business Opportunity 28

VERY profitable, easy to run restaurant, A-1 location, work for yourself with a small investment. Good vending machine route. Takes one day to service, more machines can be added. Small established manufacturing company, lots of potential. Wholesale business, large cash flow.

Advertisements for 'SMILE TODAY' and 'HAPPY ADS' featuring a cartoon character and various service offers.

CLASSIFIED ADVERTISING... COPY CLOSING TIME FOR CLASSIFIED ADVT. 4:30 P.M. DAY BEFORE PUBLICATION...

THE JOY OF BEING SINGLE... WHEN YOU GIVE BIRTHDAY PRESENTS TO A MARRIED COUPLE... AND WHEN IT'S YOUR TURN TO RECEIVE, THEY GIVE AS ONE!

WELLWOOD VIEW APARTMENTS... Wholesome family life in the Country, yet minutes away in the city...

Help Wanted - Male or Female... COUPLES - Why not supplement your income while building your future...

Household Goods 51... AVOCADO gas stove with hood... SINKS - electric self-cleaning stove...

Apartment - Flats - 63... PLEASANT 3-room apartment... MANCHESTER AREA - 4-room apartment...

LABORATORY TEACHING ASSISTANT... NURSING AIDES - experienced preferred... KITCHEN helper - experienced preferred...

Apartment - Flats - 63... PLEASANT 3-room apartment... MANCHESTER AREA - 4-room apartment...

NEW LISTING by owner... GEMMELL built Garrison Colonial, desirable location...

LABORATORY TEACHING ASSISTANT... NURSING AIDES - experienced preferred... KITCHEN helper - experienced preferred...

Apartment - Flats - 63... PLEASANT 3-room apartment... MANCHESTER AREA - 4-room apartment...

NEW LISTING by owner... GEMMELL built Garrison Colonial, desirable location...

LABORATORY TEACHING ASSISTANT... NURSING AIDES - experienced preferred... KITCHEN helper - experienced preferred...

Apartment - Flats - 63... PLEASANT 3-room apartment... MANCHESTER AREA - 4-room apartment...

NEW LISTING by owner... GEMMELL built Garrison Colonial, desirable location...

LABORATORY TEACHING ASSISTANT... NURSING AIDES - experienced preferred... KITCHEN helper - experienced preferred...

Apartment - Flats - 63... PLEASANT 3-room apartment... MANCHESTER AREA - 4-room apartment...

NEW LISTING by owner... GEMMELL built Garrison Colonial, desirable location...

LABORATORY TEACHING ASSISTANT... NURSING AIDES - experienced preferred... KITCHEN helper - experienced preferred...

Apartment - Flats - 63... PLEASANT 3-room apartment... MANCHESTER AREA - 4-room apartment...

NEW LISTING by owner... GEMMELL built Garrison Colonial, desirable location...

LABORATORY TEACHING ASSISTANT... NURSING AIDES - experienced preferred... KITCHEN helper - experienced preferred...

Apartment - Flats - 63... PLEASANT 3-room apartment... MANCHESTER AREA - 4-room apartment...

NEW LISTING by owner... GEMMELL built Garrison Colonial, desirable location...

Out of Town For Rent 66... WELLWOOD VIEW APARTMENTS... Wholesome family life in the Country...

Out of Town For Sale 72... ANOTHER FIRST... 4-Bedroom Colonial, 4 1/2 bath, 2 1/2 car garage...

Out of Town For Sale 72... KEITH Real Estate... MANCHESTER - Two-family, 5 1/2 duplex...

Out of Town For Sale 72... KEITH Real Estate... MANCHESTER - Two-family, 5 1/2 duplex...

Out of Town For Sale 72... KEITH Real Estate... MANCHESTER - Two-family, 5 1/2 duplex...

Out of Town For Sale 72... KEITH Real Estate... MANCHESTER - Two-family, 5 1/2 duplex...

Out of Town For Sale 72... KEITH Real Estate... MANCHESTER - Two-family, 5 1/2 duplex...

Out of Town For Sale 72... KEITH Real Estate... MANCHESTER - Two-family, 5 1/2 duplex...

Out of Town For Sale 72... KEITH Real Estate... MANCHESTER - Two-family, 5 1/2 duplex...

Out of Town For Sale 72... KEITH Real Estate... MANCHESTER - Two-family, 5 1/2 duplex...

Out of Town For Sale 72... KEITH Real Estate... MANCHESTER - Two-family, 5 1/2 duplex...

Out of Town For Sale 72... KEITH Real Estate... MANCHESTER - Two-family, 5 1/2 duplex...

Out of Town For Sale 72... KEITH Real Estate... MANCHESTER - Two-family, 5 1/2 duplex...

Several Ideas Open For Downtown Plan... The Mayor's Downtown Committee last night...

Several Ideas Open For Downtown Plan... The Mayor's Downtown Committee last night...

Several Ideas Open For Downtown Plan... The Mayor's Downtown Committee last night...

Several Ideas Open For Downtown Plan... The Mayor's Downtown Committee last night...

Several Ideas Open For Downtown Plan... The Mayor's Downtown Committee last night...

Several Ideas Open For Downtown Plan... The Mayor's Downtown Committee last night...

Several Ideas Open For Downtown Plan... The Mayor's Downtown Committee last night...

Several Ideas Open For Downtown Plan... The Mayor's Downtown Committee last night...

Several Ideas Open For Downtown Plan... The Mayor's Downtown Committee last night...

Several Ideas Open For Downtown Plan... The Mayor's Downtown Committee last night...

Several Ideas Open For Downtown Plan... The Mayor's Downtown Committee last night...

Several Ideas Open For Downtown Plan... The Mayor's Downtown Committee last night...

Several Ideas Open For Downtown Plan... The Mayor's Downtown Committee last night...

Assembly Meets On Revamp Plan... HOUSE REPORTS... The House has been in recess since last Tuesday...

Assembly Meets On Revamp Plan... HOUSE REPORTS... The House has been in recess since last Tuesday...

Assembly Meets On Revamp Plan... HOUSE REPORTS... The House has been in recess since last Tuesday...

Assembly Meets On Revamp Plan... HOUSE REPORTS... The House has been in recess since last Tuesday...

Assembly Meets On Revamp Plan... HOUSE REPORTS... The House has been in recess since last Tuesday...

Assembly Meets On Revamp Plan... HOUSE REPORTS... The House has been in recess since last Tuesday...

Assembly Meets On Revamp Plan... HOUSE REPORTS... The House has been in recess since last Tuesday...

Assembly Meets On Revamp Plan... HOUSE REPORTS... The House has been in recess since last Tuesday...

Assembly Meets On Revamp Plan... HOUSE REPORTS... The House has been in recess since last Tuesday...

Assembly Meets On Revamp Plan... HOUSE REPORTS... The House has been in recess since last Tuesday...

Assembly Meets On Revamp Plan... HOUSE REPORTS... The House has been in recess since last Tuesday...

Assembly Meets On Revamp Plan... HOUSE REPORTS... The House has been in recess since last Tuesday...

Assembly Meets On Revamp Plan... HOUSE REPORTS... The House has been in recess since last Tuesday...

HELP WANTED... Cloth Inspector... Weaver... General Worker... CHENEY BROTHERS, INC. 81 Cooper Hill St., Manchester, Conn. 648-4141

WE ARE LOOKING FOR YOU... if you are an EXPERIENCED COMPOSITOR... PLEASANT WORKING CONDITIONS - PAID VACATION - FULL BENEFITS... APPLY IN PERSON TO: ALBERT CERVINI, Manchester Evening Herald, 18 BISSSET ST., MANCHESTER 648-7820

KEITH REAL ESTATE... 648-4128 648-1922

NATIONAL OIL CO. FUEL OIL... AUTOMATIC OR CALL DELIVERY... 24 HR. BURNER SERVICE... PER GALLON... YEAR ROUND... 688-5544



Spruce up. It's spring.

Attics, and basements, can be real sleepers. Why not turn them into bedrooms. If you've got the space, we've got the money.

If the raindrops keep falling, better think about a new roof. You can cover it with an HNB Home Improvement Loan and take up to five years to repay.

Don't let your chimney go to pot. It could be a real fire hazard. In fact, all masonry needs a little touch up now and then to keep it weatherproof and fireproof.

Sail through the heat waves this summer in your own cool home. You can air condition your whole house or just a few rooms.

If you've come to the end of the line outside the bathroom door, build another. All it takes is a few extra feet somewhere and a little help from Hartford National.

Think snow... and then think a new heating system. An HNB Home Improvement Loan will make you feel warm all over.

Spread out a little. A new family room in the basement or breezeway gives the kids a place to play. You'll get a lot of peace and quiet with a little help from HNB.

There's nothing that brings it all together like the sheer luxury of new carpeting—even in your bathroom and kitchen. Wall-to-wall adds beauty and value to your home.

Put up a beautiful front. With a new coat of paint for your home. Or aluminum siding. A Home Improvement Loan from Hartford National will spruce up the whole place.

Pretty up your environment. With grass, shrubs, trees and flowers. A landscape gardener and a little green from HNB will make things grow.

Now you can get the job done in half the time with yard tractors, snow blowers, power mowers. You name it, we'll help you pay for it.

There's nothing that brings it all together like the sheer luxury of new carpeting—even in your bathroom and kitchen. Wall-to-wall adds beauty and value to your home.

Put up a beautiful front. With a new coat of paint for your home. Or aluminum siding. A Home Improvement Loan from Hartford National will spruce up the whole place.

Pretty up your environment. With grass, shrubs, trees and flowers. A landscape gardener and a little green from HNB will make things grow.

Pool and a patio... and presto you have your own backyard beach. You'll never have to fight Sunday traffic jams again if Hartford National can help it.

Cook up a dream kitchen fit for the Queen. Cabinets, built-in appliances, new fixtures, kitchen carpeting will create a sensation.

Your car will probably behave a lot better if you bring it in from the cold. A new garage will not only improve your car's performance, it will add value to your home.

Tired of parking in the same old rut? Install a surfaced driveway right up to your garage door. An HNB Home Improvement Loan can pave the way.

FREE TREE
 There's no obligation. This hardy little baby spruce tree is yours Free just for stopping by and inquiring about our Home Improvement Loan.

Maybe you're thinking of sprucing up your home bit by bit by bit. Sounds great. There's only one problem. By the time you finish you'll have to start all over again. At Hartford National there's a way to get all the jobs done in one fell swoop.

With only one loan. Only one payment a month. And we'll give you five years to repay and 90 days before your payments start. Ask about a Home Improvement Loan. And spruce up. It's spring.

We're with you all the way
HARTFORD NATIONAL BANK TRUST
 61 Offices serving Connecticut